

WEST WATERFORD LOCAL EMPLOYMENT SERVICE

SUPPORT SERVICE FOR THE UNEMPLOYED

WORKING UNDER CONTRACT FOR THE DEPARTMENT OF EMPLOYMENT AFFAIRS AND SOCIAL PROTECTION

JOB VACANCIES & FREE LOCAL TRAINING
WEDNESDAY 10TH AUGUST 2022

OUR OFFICES ARE NOW OPEN TO THE PUBLIC

THIS JOB PACK CAN BE ACCESSED WEEKLY VIA:

OUR OFFICES: PRESENTATION BUILDING, MITCHELL STREET, **DUNGARVAN**,
WLP OFFICES, LISMORE BUSINESS PARK, **LISMORE**.

VIA EMAIL: PLEASE EMAIL OUR OFFICE AND YOUR NAME CAN BE
ADDED TO OUR WEEKLY MAIL-OUT DATABASE.

ONLINE: WWW.WLP.IE
SELECT **JOBSEEKER TAB** HIT **LOCAL JOB ADVERTS**

FOR DAILY JOB VACANCY UPDATES
PLEASE LIKE US ON FACEBOOK ~ COUNTY WATERFORD LES

OUR CONTACT DETAILS ARE:

PHONE: 058 44077
TEXT: 086 787 0872 or 086 035 8615
Email: westwaterford.les@WLP.ie

STAFF CONTACTS : NIAMH KUHNE / PAULA HENNESSY



DUNGARVAN LEADER, FRIDAY, AUGUST 12, 2022

SITUATIONS VACANT

CHILDMINDER REQUIRED — In Kilmacthomas area for 3 year old twins starting September. Monday – Thursday (11.45am – 5pm) to include Naionra collection. Required only for second school term time. Please supply name and contact details to Box No. 954, Dungarvan Leader, 18 Mitchel Street, Dungarvan. (12/8/R)

PLASTERER REQUIRED — For busy contracting company. Please reply by email to: plasteringjob@outlook.com (26/8/R)

CHILDMINDER WANTED — After school hours, Monday – Friday, 2.30-5.30pm. Dungarvan area. Please phone 086 8158315. (12/8/R)

CARER REQUIRED TO MIND CHILD WITH AUTISM — After school, Mondays to Fridays. Dungarvan area. Please contact (086) 8231653. (12/8/R)

TRACTOR DRIVER — Experienced Tractor Driver required, full time position. Contact Kieran Hallahan, Cappoquin. 087 2549759. (26/8)

PERSON REQUIRED to take care of a young boy in his own home (Abbeyside) after Preschool 3-4 days a week. May suit creche/ECCE/AIM staff. 087 6850843. (2/9/R)

APPLE PICKERS WANTED — For September / October, Cappoquin area. Text on Whatsapp 087 9889017. (2/9/R)

ST. CARTHAGE'S HOUSE

HAS A TEMPORARY VACANCY FOR A

Cleaner

3-4 days per week.

Please email CVs to:

stcarthageshouse@gmail.com

or by post to:

St. Carthages House, Lismore, Co. Waterford

DUNGARVAN OBSERVER | Friday, 12 August, 2022

Knockmahon N.S., Bonmahon

REQUIRES

Part-time Secretary

20 HOURS PER WEEK

Reply with C.V. to:

knockmahonnsapplications@gmail.com

by Wednesday, 17th August, 2022

EXPERIENCED TRACTOR DRIVER REQUIRED.— Full-time position. Contact: Kieran Hallahan, Cappoquin. Tel. (087) 2549759. (26-8)

APPLE PICKERS WANTED FOR SEPTEMBER AND OCTOBER — Cappoquin area. Contact, TXT or WhatsApp (087) 9889017. (26-8)

CHILDMINDER WANTED AFTER SCHOOL HOURS — Monday to Friday, 2.30 p.m. to 5.30 p.m. Dungarvan area. Please phone 086-8158315. (12-8)

DAIRY FARMHAND REQUIRED — 3km from Dungarvan. Tel. (087) 3275261. (12-8)

CARER REQUIRED TO MIND CHILD WITH AUTISM AFTER SCHOOL — Mondays to Fridays. Dungarvan area. Please contact 086-8231653. (12-8)

PLASTERER REQUIRED FOR BUSY CONTRACTING COMPANY — Please reply by email to plasteringjob@outlook.com (12-8)

WATERFORD NEWS & STAR
AUGUST 9, 2022



**Our Lady of Mercy Secondary School,
Waterford**
are seeking applications for a

Part Time SECRETARY

Please apply to
office@mercywaterford.com
before **August 15th** with a CV and cover letter.
The school is an equal opportunities employer.



**Co. Waterford Farm Relief Services Ltd are hiring
Dairy Farm Assistants**
The work includes:
Animal husbandry, milking, calf rearing &
general farm work.

Minimum hours: 39 hours per week
Minimum remuneration: €30,000/year
Location: Co. Waterford
Apply to: gmalone@waterfordfrs.ie

**etb**Bord Oideachais agus
Oiliúna Thiobraid Árann
Tipperary Education and
Training Board**TIPPERARY EDUCATION AND TRAINING BOARD**invites applications from suitably qualified
persons for the following:

Ref: 22-23-127

**BACK TO EDUCATION INITIATIVE (BTEI) -
CLERICAL OFFICER GRADE III POST**

Career Break Cover - 35 Hrs. P/W

3 Days in Clonmel and 2 Days in Carrick-on-Suir

Current Wholetime Incremental Salary Scales:

Pre 2011 - €27,387 - €41,501 (Pro Rata)

Post 2011 - €25,353 - €41,501 (Pro Rata)

Application form and further details are available from
www.tipperaryetb.ie

Closing date is 12 noon on Thursday 18th August, 2022.

Late applications will not be accepted.

This is an open competition as outlined in the Department of
Education Circular Letter 0008/2017.

Shortlisting may apply. Canvassing will disqualify.

Tipperary ETB is an equal opportunities employer.

**etb**Bord Oideachais agus
Oiliúna Thiobraid Árann
Tipperary Education and
Training Board**TIPPERARY EDUCATION AND TRAINING BOARD**Invites applications from suitably qualified and
experienced persons for the following post:

Ref: 22-23-128

**SCHOOL SECRETARY - CLERICAL OFFICER
GRADE III POST - PWT**St. Alib's School, Tipperary Town, Part Time -
18.5 hrs per week

Subject to Department of Education approval.

Current Wholetime Incremental Salary Scale:

Pre 2011 - €27,387 - €41,501 (Pro Rata)

Post 2011 - €25,353 - €41,501 (Pro Rata)

Application form and further details are available on
www.tipperaryetb.ieClosing date for receipt of completed application forms is:
12 noon on Thursday 18th August, 2022.

Late applications will not be accepted.

This is an open competition as outlined in the Department of
Education Circular Letter 0008/2017.

Shortlisting of applicants may take place.

Tipperary ETB is an equal opportunities employer.

Bernadette Cullen, Chief Executive

The Nationalist
11/8/22Comhairle Contae Thiobraid Árann
Tipperary County Council**FIREFIGHTER VACANCIES**Applications are invited for the position of Retained
Fire fighter with the following Brigades:

- Borrisokane
- Cashel
- Nenagh
- Templemore
- Cahir
- Clonmel
- Newport
- Thurles
- Carrick-on-Suir
- Cloughjordan
- Roscrea
- Tipperary Town

Potential average Annual Earnings €20,000 to €25,000.

Panels may be created from which vacancies arising
during the lifetime of these panels will be filled.
Depending on the number of applications received
shortlisting of candidates may be necessary.
Shortlisting will be based on the information on
your application form.Application forms and further particulars are
available on www.tipperarycoco.ie or by e-mail from
recruitment@tipperarycoco.ie. Completed and typed
application forms (4 hard copies only) must be returned
to Human Resources Section, Tipperary County Council,
Civic Offices, Clonmel, Co. Tipperary, E91 N512, by not
later than 4.00pm on Wednesday 7th September, 2022.

Garda vetting applies to this position.

**TIPPERARY COUNTY COUNCIL IS
AN EQUAL OPPORTUNITIES EMPLOYER**

Clogheen Co. Tipperary

REQUIRE

Chefs all Grades

Kitchen Porter | Waiting Staff

Restaurant opening mid to late August.

To Apply:

Email CV to: themarketstone@gmail.com

The Nationalist
11/8/22



KNOCKANRAWLEY

Knockanrawley Resource Centre

is currently seeking to appoint

FAMILY THERAPISTS X 2

Part-time, up to 21 hr/week

Job Purpose & Person Specification:

The Individual, Couple and Family Therapy Service provide counselling, psychotherapy and systemic family therapy. Our team of highly qualified and registered counsellors / psychotherapists are committed to supporting those dealing with challenges such as anxiety, depression, bereavement, addiction, child and adolescent issues, post-traumatic stress, couples relationship difficulties, family mediation and conflict medication. KRC is currently seeking two part-time Family Therapists to join our team.

Applicants must have a 3-year full-time general training in the human sciences at degree level and have successfully undertaken and completed a specialist training in Family Therapy and Systemic Practice spanning, not less than four years and incorporating not less than 1600 training hours, accredited by FTAI or equivalent body.

**Further Information, Detailed CV & Cover Letter to Centre Manger,
Knockanrawley Resource Centre on 062 52688 or
knockcentremanager@gmail.com. Deadline for application: August 23rd, 5pm
KRC is an equal opportunities employer.**

Incorporated with limited liability No. 190219 and RCN 20027926



EUROPEAN UNION
Investing in your future
European Social Fund



EUROPEAN UNION
Investing in your future
European Social Fund



EUROPEAN UNION
Investing in your future
European Social Fund



EUROPEAN UNION
Investing in your future
European Social Fund



etb

Bord Oideachais agus
Oiliúna Thiobraid Árann
Tipperary Education and
Training Board

TIPPERARY ETB

invites applications for the following:

Ref 22-23-129

SPECIAL NEEDS ASSISTANT PANEL 2022/2023

Further details/rates of pay/qualifications required, and application forms are available on our website www.tipperaryetb.ie

Closing date for receipt of applications is 12 noon on Wednesday 17th August, 2022.

Late applications will not be accepted.

Signed: Bernadette Cullen, Chief Executive,



European Union
Investing in your future
European Social Fund

Provision supported by the Government of Ireland and the European Union.



European Union
Investing in your future
European Social Fund



European Union
Investing in your future
European Social Fund



European Union
Investing in your future
European Social Fund



European Union
Investing in your future
European Social Fund



European Union
Investing in your future
European Social Fund

SOLAS
learning works

The Nationalist
11/8/22



Ring a Link
0818 42 41 41

Operating Rural
Transport Services
under TFI LOCAL LINK
brand is looking for

MINI BUS DRIVERS

Part time

For services in the Tipperary Town
& Clonmel area's.

Min 1-2 years
Bus/Coach driving experience
Full Clean Irish Licence
Valid Digicard
Up to date with all CPC modules
Good track record.

Please apply in writing /email to
jackie.meally@locallink.ie with a CV enclosing
a copy of your D or D1 licence and CPC card
to the address below:

Closing date for receipt of applications:

Wednesday 24th August 2022

The Manager

Ring a Link

Unit 4, Cillin Hill, Dublin Rd, Kilkenny.

LIMERICK: 17th OCTOBER 2022

Learn how to take blood ...

TRAIN AS A PHLEBOTOMIST

Introduction to Phlebotomy

ONE DAY CLASSROOM COURSE

(THEORY STUDY ONLINE)



- First step onto Allied Healthcare Career Path
- Accredited Qualification OCN + CPD Accredited
- No previous experience needed
- Nationally Recognised (Ireland Level 6)



For more information or to book online:

www.geopace.net

HIGH DEMAND IN: Hospitals • GP Surgeries • Clinics • Private Sector • Community

FULL-TIME ASSISTANT – VENTURE CLOTHING DUNGARVAN



Venture Clothing

August 3 at 5:09 PM · 🌐

...

🌟🌟🌟 WE ARE HIRING 🌟🌟🌟

We now have an opening for a fulltime position as some of our girls are heading back to college after the summer season.

This may suit someone that is taking a year out from studies or may have just finished leaving cert and might like to work for the year before heading to college.

If you are interested send your CV with cover letter to ventureck@yahoo.co.uk

IMPORTANT

* Must be available to work weekdays and weekends.

*Must be flexible.



Venture Clothing

Venture Clothing is Dungarvan's leading store for men and women. With great ...

Call now

[Advertised on facebook](#)

Q Job title, Skill or Company

📍 Location



Ukraine Crisis Appeal

[Donate Now](#)[<< Return to Job Search](#)

Retail Sales Consultant

Vodafone The Phone Stores

📍 Dungarvan, County Waterford, Ireland

€ Not Disclosed

📅 Part Time

🕒 04 Aug

[Apply Now](#)

Description

Company Details

We are now hiring a part time Retail Sales Consultant for our Dungarvan Store. We are an exclusive sales partner for Vodafone operating an extensive network of stores and a field sales team in Leinster and Munster of Ireland . We are looking for dedicated sales representatives to sell the full portfolio of Vodafone's fixed and mobile products. This sales role will provide you with an opportunity to sell a portfolio of market leading products . As a Retail Sales Consultant your focus will be sales delivery and supporting your team in achieving team targets.

Requirements

- Team player with a focus on delivering sales targets and first-class customer service to our customers
- Proven track record in sales
- Keen interest in technology and what connectivity can enable customers to do
- Passion, drive and skills to help us drive sales growth and service across the market
- Sales driven and motivated by exceeding targets
- Passionate about new technology
- Enjoy competition but also work well as part of a team
- Strong confident communicator

Benefits

- **€22,000** Basic Salary to **€26,000** Basic Salary
- Continual training courses to enhance your Career Progression Plans
- Employee Assistance Programme available for both you and your family.
- Generous Family and Friends Mobile and Fixed Monthly Discounts.
- Multiple career progression opportunities across our business
- Laya Healthcare

Skills:

Customer Service & Sales Retail target driven

Part time jewellery sales assistant, 4 days a week, immediate start- job post

[Dalton jewellers](#)

Dungarvan, County Waterford

Part-time

Apply now

Job details

Job type Part-time

Full Job Description

Sales assistant,

Selling jewellery and dealing with customers on a one-to-one basis.

Basic watch and jewellery repairs.

Work remotely No

Job Type: Part-time

Schedule: 8 hour shift

Experience: Sales: 1 year (preferred)

[Advertised on www.indeed.com](http://www.indeed.com)

Retail Operative- job post

[Butcher Shop Dungarvan](#)

Dungarvan, County Waterford

€10.50 - €14.50 an hour - Full-time, Part-time, Permanent

[Apply now](#)

Job details

Salary

€10.50 - €14.50 an hour

Job type Full-time Part-time Permanent

Full Job Description

Full and part time retail operatives required for busy butcher shop in Dungarvan. Immediate start.

Top rates paid to the right candidate.

Job Types: Full-time, Part-time, Permanent

Salary: €10.50-€14.50 per hour

Schedule: 8 hour shift

[Advertised on www.indeed.com](http://www.indeed.com)

Temporary/Full Time Restaurant Supervisor- job post

[Burke Hotels Ltd T/A Lawlors Hotel](#)

Dungarvan, County Waterford

Full-time, Temporary

[Apply now](#)

Job details

Job type

Full-time

Temporary

Full Job Description

We are currently looking for a temporary/permanent restaurant supervisor. We would like the candidate to have experience in a similar role with the ability of insuring that the restaurant runs smoothly on a day to day basis. Managing staff rosters. The ability to look after customers and work with a friendly team.

Job Types: Full-time, Temporary

Schedule:

- 8 hour shift
- Every weekend
- Monday to Friday

Ability to commute/relocate:

- Dungarvan, Dungarvan, CO. Waterford X35 DT04: reliably commute or plan to relocate before starting work (required)

Experience:

- Hospitality management: 1 year (preferred)
- Restaurant: 2 years (required)

Application deadline: 15/08/2022

Expected start date: 15/08/2022

[Advertised on www.indeed.com](http://www.indeed.com)

Retail Sales Assistant- job post

[Paul Byron Shoes](#)

Dungarvan, County Waterford

€10.50 an hour - Full-time

[Apply now](#)

Full Job Description

Paul Byron Shoes are now seeking to hire experienced Retail Sales Assistants for a Full Time position in Dungarvan, Co. Waterford.

Responsibilities of this role:

- Sell to and assist potential customers.
- Dealing with customer queries including telephone queries in a professional and efficient manner.
- Ensure excellent store standards are delivered at all times by merchandising, pricing and displaying stock to maximise sales.
- Display excellent product knowledge and ongoing interest.
- Work with Store Manager on all duties within the store.
- Manage point of sale processes including cash and card transactions.

Skills and Experience:

- Retail/ Customer Experience is essential.
- Excellent interpersonal and communication skills.
- A keen customer focus.
- The successful candidate should demonstrate a willingness to learn and keep up to date with products.
- Ability to work on own initiative.
- Flexible to work any five days in a seven day period.

Job Type: Full-time

Salary: From €10.50 per hour

Benefits: Employee discount

Schedule: 8 hour shift

Application question(s): If successful in obtaining the position, when are you available to start?

Experience: Sales: 1 year (preferred)

[Advertised on www.indeed.com](#)

Retail Vacancies - Dungarvan - job post

[BoyleSports](#)

Dungarvan, County Waterford

Permanent

[Apply now](#)

Job details

Job type

Permanent

Full Job Description

We are always on the lookout for the next generation of ambitious, energetic people to drive our business forward. We are currently recruiting nationwide for;

CASHIERS

The role of a BoyleSports cashier is to provide an excellent level of customer service throughout the day. The essential ingredients are; a friendly manner, a fast and efficient service and accurate cash handling.

DEPUTY MANAGER

The Deputy Manager assists the Shop Manager in all duties to ensure the shop operates effectively on a daily basis. The Deputy Manager will be required to open and close and perform all management duties in the Manager's absence.

SHOP MANAGER

The overall objective of our Shop Manager is to provide, manage and sustain a front line service to our customers that will enhance our competitive position as "The Best Service and Standard Provider in the Industry". So, if you are a friendly and enthusiastic team player who delivers excellent customer service and are interested in this exciting opportunity, please see below details to apply.

TRAINING

We provide a comprehensive training programme for Cashier, Deputy Managers and Shop Managers. We operate a fast-track program for all employees, who possess the qualities necessary to become a Deputy Manager or Manager. We provide full and part time positions and flexible working arrangements over a 7 day week. All we require is that you have experience in a friendly, fast paced retail environment.

[Advertised on www.indeed.com](http://www.indeed.com)

Qualified Butcher- job post

[Butcher Shop Dungarvan](#)

Dungarvan, County Waterford

€25,421 - €40,000 a year - Full-time, Permanent

[Apply now](#)

Job details

Salary

€25,421 - €40,000 a year

Job type

Full-time Permanent

Full Job Description

We are recruiting a Qualified Butcher for our butcher shop in Dungarvan.

Top rate of pay and conditions for the right candidate.

| | |
|------------|--------------------------------|
| Job Types: | Full-time, Permanent |
| Salary: | €25,421.44-€40,000.00 per year |
| Schedule: | 8 hour shift |

[Advertised on www.indeed.com](http://www.indeed.com)

Admin Assistant- job post

Western Brand

Cappoquin, County Waterford

Full-time

You must create an Indeed account before continuing to the company website to apply

[Apply on company site](#)

Job details

Job type Full-time

Full Job Description

Western Brand is one of Ireland's largest producers of Irish chicken, its commitment to quality and excellence has grown the business to be at the forefront of poultry technology with EU, BRC and Bord Bia approved facilities.

We're hiring an **Admin Assistant** that will help assist the hatchery in Ballygamon Lower, Co. Waterford and play a key role in the daily duties which are fundamental to our entire business.

Working Hours: Monday to Friday from 8:00 AM to 4:30 PM

Key responsibilities will include:

- Manage all transportation activities including scheduling drivers, arrange vehicle servicing and documentation
- Main point of contact for all customer complaints and queries
- Running payroll
- Monitoring annual leave and other staff absences
- Organise staff training
- Compile reports for management and for audit by government agencies and assurance schemes
- Procurement of all supplies
- Oversee the preparation, sampling and testing in accordance with the hygiene programme
- Ensuring adherence to industry QA standards and preparation for Audits by providing supervision, training and guidance to staff as required. Participating in training programmes,

undergoing further training as required and participating in schemes to ensure on going competence and development of skills

We're looking for a hard-working and reliable candidate to work at one of the most technologically advanced hatcheries in Europe

Full training will be provided

Job Type: Full-time

Schedule: 8 hour shift

COVID-19 considerations:

Extensive COVID-19 precautions are in place, all employees are required to wear PPE & maintain social distancing

Ability to commute/relocate:

- Cappoquin, CO. Waterford: reliably commute or plan to relocate before starting work (preferred)

[Advertised on www.indeed.com](https://www.indeed.com)

[Back](#)

Dairy Farm Assistant - Carrick On Suir, Co. Waterford - 03425



Farm Solutions Ltd



Ref: #JOB-2237867

Carrick-On-Suir, Carrick-On-Suir,
Knocknaconnery, County Waterford, Ireland

No of positions: 1



Paid Position



39 hours per week



30000.00 Euro Annually



Published On: 08 Aug 2022



Closing On: 05 Sep 2022

[Apply](#)

Job Description

[Share](#)

Farm Solutions Ltd are seeking a dairy farm assistant in Carrick On Suir, Co. Waterford a 190 cow dairy herd. We are seeking a candidate that has dairy farm experience, including milking, animal husbandry, milk quality control and farm maintenance. A minimum of 39 hours per week, remuneration of €30000 pa. Accommodation provided on the farm.

Career Level

- Experienced [Non-Managerial]

Candidate Requirements

Essential

- Minimum Experienced Required (Years): 2
- Minimum Qualification: Level 5 (incl Leaving Certificate/ Leaving Certificate Applied/ Leaving Certificate Vocational Programme)

Desirable

- Ability Skills: Analytical, Communications, Creativity
- Competency Skills: Flexibility, Initiative
- Driving Licence: Full B M W
- Languages: English C2-Master (Fluent)

Follow Us

Our Mission

At JobsIreland, we aim to help people to get jobs and help employers connect with the right people.

Whether you're looking for your next job or finding the right person to join your team, JobsIreland can help you.

JobsIreland

[About us](#)
[Employment](#)
[Privacy](#)
[Cookie Policy](#)
[Terms and Conditions](#)
[Gov.ie](#)
[Show accessibility settings](#)

Q Job title, Skill or Company

📍 Location



Ukraine Crisis Appeal

Donate Now

[<< Return to Job Search](#)

Spa Therapist

Cliff House Hotel

📍 Ardmore, Duffcarrick, County Waterford, Ireland

€ Not Disclosed

📅 Permanent

🕒 1 Day Ago



Apply Now

Description

Company Details

We bring our guests on a journey and now let us take you on a journey and join our team

Named after the sacred spring at St Declan's Well, just a short walk from our hotel, our therapies and custom spa products are inspired by nature to nourish the body and transform the skin.

Designed by award-winning spa consultants, every product used in our treatments is made from a blend of 100% natural ingredients and includes unique elements such as Irish peat, carrageen moss and seaweed.

Requirements:

- Previous Spa experience
- Works well as part of a team
- Flexibility required with shifts

Key Duties & Responsibilities:

- Beauty and Body treatments as per guest needs
- Dealing with guest queries
- Cover the Well reception duties when required

Skills:

- Be dynamic and take pride in their appearance
- Trained reflexology and/or Holistic therapies would be desirable but not essential
- Good communication skills

Benefits

- Generous staff discounts
- Meals on duty
- Career development opportunities
- Uniforms provided

Skills:

Massage Spa treatment Body Massage facial

Benefits:

Generous staff discounts • Meals on duty Career development opportunities
Uniforms provided

🔍 Job title, Skill or Company

📍 Location



Ukraine Crisis Appeal

Donate Now

[<< Return to Job Search](#)



Day/Night Porter Cliff House Hotel



- 📍 Ardmore, Duffcarrick, County Waterford, Ireland
- 💶 Not Disclosed
- 🏢 Permanent
- 🕒 03 Aug



Apply Now

Description

Company Details

Porter Job Responsibilities:

- Maintain cleanliness of public and work areas throughout the day or night, practicing clean-as-you-go procedures.
- Completes final breakdown of service areas, by cleaning the room, and cleaning and returning equipment to its proper location.
- Completes closing duties, including storing all reusable goods, locking doors, breaking down goods, etc.
- Sets up, stocks, and maintains work areas.
- Monitors and maintains cleanliness, sanitation, and organisation of assigned station and service areas.
- Transports dirty linen to correct area to be cleaned, separates napkins from tablecloths, and restocks linen shelves with clean linens.
- Assists other departments when needed to ensure optimum service to guests.

Skills:

- Excellent communication and organisational skills.
- Highly responsible & reliable.
- Ability to work cohesively as part of a team.
- Ability to focus attention on guest needs

Benefits:

- Competitive Rate of Pay Depending on Experience.
- Generous Staff Discounts.
- Uniform Provided.
- Meals Provided On Duty.

Apply For This Job

You are just a few steps away



Ukraine Crisis Appeal

[Donate Now](#)[<< Return to Job Search](#)

Chef de Rang / Station Waiter/Waitress (1 Michelin Star)

Cliff House Hotel

Waterford, County Waterford, Ireland

Not Disclosed

Permanent

02 Aug

[Apply Now](#)

Description

Company Details

We are seeking an ambitious, passionate and friendly person to join our esteemed House Restaurant Team delivering a top class service of our fantastic menu of authentic Irish food sourced where possible from our sea and land, which is excellently partnered with our champagne, wine and beverage menu.

Requirements:

- 1+ years' experience
- Excellent command of English language
- Professional but friendly, welcoming manner

Key Duties and Responsibilities:

- Mis-en-place is carried out
- Ensuring high standard of service
- Carrying out closing procedures efficiently

Skills:

- Standards driven and detail-orientated
- Excellent self-presentation
- Strong food & beverage knowledge

Benefits:

- Competitive salary
- Meals on duty
- Excellent work environment

Skills:

- Standards driven and detail-orientated
- Excellent self-presentation
- Strong food & beverage knowledge

Benefits:

- Competitive Salary
- Excellent Working Environment
- Career Development Opportunitites
- Meals provided on duty
- Uniform Provided
- Staff Incentive Programmes
- Generous Staff Discounts

Apply For This Job

You are just a few steps away

Get started by entering your email

Email

Next

First Name

Last Name

ATTACH A CV TO YOUR APPLICATION

No CV attached



Cover Note

WATERFORD COUNCIL VACANCIES



Waterford Council

3h · 🌐

...

Applications are now invited for the following panels:

- Assistant Staff Officer Panel – Grade 4 (Open Competition)
- Civil Technician Grade 1

Application Form and Candidate Information Booklet can be found on our website

<http://ow.ly/SRkt50KeFAj>

Closing date for the above is 4pm Friday, 12th August 2022.

Applications to be returned by email to recruitment@waterfordcouncil.ie by the closing date and time above.

#Hiring #JobFairy #Waterford

We are hiring!

 **Waterford Council**
Waterford City & County Council

[Advertised on facebook](#)

ADMINISTRATIVE OFFICERS – REVENUE COMMISSIONERS

Job Alert. Waterford Jobs - JobAlert.ie
August 6 at 8:00 AM · 🌐

...

Administrative Officers are now required at the Revenue Commissioners Office. Positions are Available Nationwide.

Salary: €33,889 - €64,038 per year.

Apply here: <https://www.jobalert.ie/.../administrative-officer...>

To advertise your job on our Facebook page & website click here:
<https://www.jobalert.ie/employers>

#jobs #ireland #nowhiring #apply #cv

Administrative Officer Full-time, Permanent

Nationwide

€33,889 - €64,038 per year

APPLY NOW

Revenue 
Cáin agus Custaim na hÉireann
Irish Tax and Customs



i

JOBALERT.IE

Administrative Officer | Revenue Commissioners | Nationwide - 5th August |
JobAlert.ie

[Advertised on facebook](#)

DRIVER / SUPPORT ATTENDANT – HSE

Job Alert. Tipperary Jobs - JobAlert.ie
22h

...

The HSE are now hiring a Driver / Support Attendant in the following locations:

- ♥ Carlow
- ♥ Kilkenny
- ♥ South Tipperary
- ♥ Waterford
- ♥ Wexford

€29,337 - €36,397 per year.

Apply here: <https://www.jobalert.ie/job/driver-support-attendant-the-hse>

To advertise your job on our Facebook page & website click here:

<https://www.jobalert.ie/employers>

#job #tipperary

**Driver / Support
Attendant
Full-time**

Carlow, Kilkenny, South Tipperary,
Waterford and Wexford

APPLY NOW



Fóidhmeannacht na Seirbhíse Sláinte
Health Service Executive

JOBALERT.IE

Driver / Support Attendant | The HSE | Tipperary - 7th August | JobAlert.ie

Driver / Support Attendant - Locations: Carlow, Kilkenny, South Tipperary, Waterford and Wexf...

[Advertised on facebook](#)



**Full details of these vacancies can
be found on www.jobsireland.ie**

**An Roinn Coimirce Sóisialaí
Department of Social Protection**

CE Vacancies

[Community Employment Schemes]

CES – 2236876 – Cleaner - Dungarvan

Duties to include cleaning of the Church, offices and toilets. Arranging symbols for Church events. Look after and water flowers. Check supplies and notices are in date. Candidate will receive on the job training to help get used to job.

CES – 2235194 – Caretaker - Cappoquin

Duties to include working as a Caretaker in Cappoquin Community Centre, may have to work evenings or weekends.

CES – 2235083 – Environmental Worker - Ballymacarbry

Working with Ballymacarbry Tidy Towns , Duties will include the maintenance and upkeep of the communal areas of the village , this is a developmental opportunity , all training will be provided.

CES – 2234830 – Administrator - Dungarvan

Duties Reception and Customer Care. Strong ability to communicate effectively. Answering calls, taking messages and handling correspondence. Computer literate and proficient in the use of Word, Excel, Desk Top Publishing a distinct advantage. Proficient at typing, preparing and collating reports and newsletters. Emails – checking parish emails daily, responding, deleting setting up new contacts and groups etc. Photocopying, printing, filing, organising meetings, rotas, managing databases, prioritising workloads. . Maintaining diaries and arranging appointments Administration for Sacraments including Baptisms for Ring/Old Parish and Kilgobinet, Colligan and Kilbrien Parish. Implementing new procedures and administrative systems. Liaising with relevant committees and organising rotas. Balancing petty cash. Candidate will receive on the job training to help get used to the office procedures. This is a training opportunity and any training or up skilling needed to enhance existing or new skills will be encouraged

CES – 2234652 – Maintenance / Caretaker - Lismore Cathedral

Duties will include maintenance and upkeep of walkways, grass cutting, use of strimmer to keep pathway along routes visible. Make sure signage is easily visible with maintenance and repair of styles and gates on the route. Litter collection and waste management, pest control, planting. General caretaker duties, maintenance of buildings, carpentry work, painting, internal and external cleaning along with handling of stock and equipment. Various other duties from time to time as required.

CES – 2234651 – Maintenance / Groundsperson - Lismore GAA & Community Centre

Duties will include general Grounds person and caretaker duties, Pitch, Field & grounds maintenance, use of tractor, mowers, strimmers and associated equipment etc. Maintenance of buildings, painting, cleaning internal and external, open and close buildings set up of equipment. General maintenance duties, carpentry work, painting, internal and external cleaning

CES – 2234650 – Groundsperson - Tallow

Grounds Person - Brideview United Soccer Club – Tallow

Duties will include general Grounds person and caretaker duties, Pitch, Field & grounds maintenance, use of tractor, mowers, strimmers and associated equipment etc. Maintenance of buildings, painting, cleaning internal and external, open and close buildings set up of equipment. General maintenance duties. Various other duties from time to time as required.

CES – 2234649 – Crèche Worker - Lismore

Crèche Worker - Scallywags Childcare – Lismore

Duties to include assisting the Crèche /Playschool Leader with all general associated childcare tasks and duties, supervision of children, plan activities, teach through play etc. Various other duties from time to time as required. Participant will be expected to undertake childcare training and development including QQI Level 5 childcare training where relevant.

CES – 2233145 –Caretaker / Groundsperson - Dungarvan

Caretaker with Dungarvan Men's shed, Responsible for: Opening and closing Shed, Safe Custody of keys, assist with Members projects, keep external area in good order etc.

CES – 2233289 – Caretaker - Cappoquin

General Maintenance of Tourin GAA Field and Hall

CES – 2227957 – Cleaner - Stradbally

Indoor and outdoor cleaning of all areas in the club house and dressing rooms and general cleaning duties. Location Stradbally GAA Centre.

CES – 2227953 – Environmental Worker - Kilrossanty

Duties to include grass cutting, strimming and caretaking/maintenance duties in and around Kilrossanty GAA.

CES – 2232683 – Cleaner - Dungarvan

Cleaning, light maintenance, room set up. Garda vetting required

CES – 2232682 – Caretaker / Cleaner - Dungarvan

Cleaning, light maintenance, room set up. Garda vetting required

CES – 2232679 – Caretaker - Causeway Tennis Club Dungarvan

5 mornings per week. Duties include light maintenance, caretaking, painting, cleaning.

CES – 2232678 – Groundsperson - Dungarvan Golf Club

Grass cutting, horticultural work, general maintenance work at Dungarvan Golf Club.

CES – 2232423 – Environmental Worker - Dungarvan

Duties include maintenance of grass areas, flowerbeds, litter control, painting, general maintenance work in various parts of the sponsored designated areas. Location: Stradbally Tidy Towns.

CES – 2232388 – Caretaker - Dungarvan

Responsible for: Opening and closing Shed, Safe Custody of keys, assist with Members projects, keep external area in good order etc.

CES – 2226551 – Caretaker - Kilmacthomas

Job is based at Kilmacthomas GAA Grounds. Duties include grass cutting, pitch lining, club house duties, general field maintenance

CLIENTS OF THE LES - LOCAL EMPLOYMENT SERVICE IN DUNGARVAN / LISMORE

CAN PHONE

NIAMH KUHNE OR PAULA HENNESSY - LOCAL EMPLOYMENT SERVICE - TEL: 058 44077

Work Placement Experience Programme



Intreg Work Placement Experience Programme

- Gain valuable work experience
- Receive accredited training
- Connect with employers
- Increased weekly payment to €306

Brought to you by the Department of Social Protection



WPEP
Work Placement Experience Programme

Unemployed?
Looking to gain new skills and work experience?
Could the Work Placement Experience Programme be for you?

You can:

- get quality work experience
- learn new skills and participate in formal training
- get an increase in your weekly payment



Get work experience
Get new skills
Get training & support

A placement:

- is 30 hours per week for six months
- is designed to give you new skills; includes mentoring and QQI accredited training options
- will provide you with better employment options in future
- can help you change career

View available work placements at
www.jobsireland.ie

For more information
Visit: www.gov.ie/wpep
Email: wpep@welfare.ie
Telephone: 0818 111 112

Brought to you by the Department of Social Protection

Work Placement Experience Programme

From [Department of Social Protection](#)

Published on 12 July 2021

Last updated on 15 October 2021

- [1. What the Work Placement Experience Programme is](#)
- [2. How to qualify](#)
- [3. Rate of payment](#)
- [4. Apply](#)
- [5. Operational Guidelines](#)

For measures announced in Budget 2022, [please click here](#).

What the Work Placement Experience Programme is

The Work Placement Experience Programme (WPEP) is a 6-month, 30 hour per week voluntary work experience programme. The programme is for jobseekers that are currently getting a qualifying social welfare payment and who have been unemployed for six months (156 days) or more.

The weekly rate of payment is €306.

See the qualifying list in the [next section](#).

If you would like to re-train and gain experience in another type of employment, this programme can help you build new skills and gain work experience. You cannot take a placement where you already have built up experience in the role.

You can work part-time while you are on the programme, provided the part-time work does not impact your placement. The part-time work cannot be with the WPEP host.

COVID-19 Pandemic Unemployment Payment

If you are getting the COVID-19 Pandemic Unemployment Payment (PUP) and you would like training and work experience in a new work role, the WPEP may be an option for you.

Time spent on PUP may be counted as part of the 6 month (156 day) qualifying criteria for WPEP, but you must transfer to one of the [qualifying payments](#) before you can take up a WPEP placement.

How to qualify

To qualify for the Work Placement Experience Programme, you must be a jobseeker:

- aged between 18 and 65 years, and
- on a qualifying scheme for at least 6 months (156 days), and
- currently getting certain social welfare payments

The qualifying payments are:

- [Jobseeker's Allowance](#)
- [Jobseeker's Benefit](#)
- [Jobseeker's Transitional Payment](#)
- [One-Parent Family Payment](#)
- [Disability Allowance](#)
- [Blind Pension](#)
- [Farm Assist](#)
- [Jobseeker's Benefit for the Self-Employed](#)

Time spent on the schemes below may be counted as part of the 6 month (156 day) qualifying criteria. You must transfer to a Jobseekers' payment before you can take up the placement.

- [COVID-19 Pandemic Unemployment Payment](#)
- [Community Employment Programme](#)
- [Back to Education Allowance](#)
- [Youthreach](#)
- [Springboard](#)
- [Solas Training Programmes](#)
- [TÚS - Community Work Placement Initiative](#)
- [Rural Social Scheme](#)

Jobseekers who are currently getting the COVID-19 Pandemic Unemployment Payment must qualify and switch to a Jobseekers' payment before they start the programme.

The [WPEP Guidelines](#) provide information on participant eligibility or you can check with your [local Intreo Centre](#) Case Officer to see if you are entitled to take part in any scheme or placement.

Apprenticeships

You may have heard about Apprenticeships but not understood what they are or what they involve.

Apprenticeships are a fantastic opportunity to train in a specific skilled area while getting paid and earning a qualification. In Ireland, there is a lack of skilled workers in certain industries. This is especially true with some losing their jobs during the pandemic. An apprenticeship is a great way to change careers and immediately start earning again.

But what exactly is an apprenticeship and how does it work? In this blog, we'll answer these questions and more.

What is an apprenticeship?

An apprenticeship is a training and education programme that combines learning in a college/university or training centre with work-based learning in a company.

At least 50% of apprenticeship learning is completed in the workplace.

When you think of an apprenticeship you probably think of things like carpentry, plumbing, mechanics, and electrical apprenticeships. These 'traditional' apprenticeships are called craft apprenticeships.

A craft apprenticeship generally lasts for 4 years, during that time you will spend 3 different periods in off-the-job training. Craft apprenticeships include carpentry, plumbing, motor mechanics and electrical apprenticeships. Craft apprentices are awarded a QQI Level 6 certificate.

Since 2016, new apprenticeships introduced can be for between 2 and 4 years and lead to an award between Levels 5 and 10 on the [National Framework of Qualifications](#).

There are a number of models of on-the-job and off-the-job training, as well as different models of delivery and different target groups. Industry-led groups which work with education and training providers and other partners, oversee the development and roll-out of new apprenticeships. New apprenticeships are available in Information Communications Technology (ICT), finance, insurance and hospitality including software development, accounting technician, insurance practitioner and commis chef.

All successful apprentices receive a QQI qualification which is recognised internationally.

What types of apprenticeships are available?

There are currently 64 different types of apprenticeship available and over 8,400 employers approved to train apprentices. Check out [the Apprenticeship website](#) to see exactly what's available.

More programmes are being developed all the time. On Monday 23, May, the first-ever [apprenticeship for bar managers](#) was launched.

Will I earn money?

Yes, you will! Apprentices 'earn while they learn' – they have a formal employment contract and are paid a salary for the duration of their apprenticeship training.

If you are doing a craft apprenticeship, then you will be paid the [recommended apprenticeship wage](#) by your employer while you are on the job, when you are in college the Education and Training Board will pay you a weekly allowance that is the same as your on-the-job wage.

If you are doing a new apprenticeship (those developed since 2016) you will be paid by your employer for the duration of the apprenticeship. The rate of pay is agreed between you and your employer. How much you will earn will depend on the apprenticeship programme you do.

Important to note: Your annual leave entitlements continue to add up when you are off the job. But you must take them when you are on the job and with the agreement of your employer.

If you are an apprentice with children, you should investigate whether you qualify for the [Working Family Payment](#) (WFP). It is a weekly tax-free payment for employees who have children. Apprentices qualify for the payment once they meet the other criteria.

How do I qualify for an apprenticeship?

Generally speaking, you need to be at least 16 years old and have a minimum Grade D in 5 subjects in the Junior Cert or equivalent. However, some apprenticeships and employers might require higher qualifications and other requirements. It all depends on the apprenticeship.

But don't worry if you don't meet the criteria – there are alternative routes to accessing an apprenticeship! If you don't have the required qualifications, you can complete an approved preparatory training course followed by an interview or if you are over 18 and have a minimum of 3 years of relevant work experience you can do an assessment interview.

Some apprenticeships will require you to pass a colour vision test.

What does it cost?

Apprentices do not pay tuition fees. However, they do have to pay the [Student Contribution Charge](#) (also known as the registration fee). They do not pay the full amount but pay a part of the fee based on how long they will be in the college.

For example, the student contribution charge is capped at €3,000 per academic year for full time students. For an apprentice who might spend a 10/11 week semester at college they would only pay €1,000.

Apprenticeships do not qualify for the SUSI grant.

Who can be an apprentice?

Anyone can be an apprentice, as long as you meet the criteria! Apprentices are learners of all ages who come from all types of educational and employment backgrounds. – there are currently over 24,000 apprentices completing training in Ireland and they include school leavers, older learners, people who wanted a career change, women, people with disabilities and people from diverse backgrounds.

How do I apply for an apprenticeship?

To apply for an apprenticeship, you should contact the apprenticeship section of your [local Education and Training Board \(ETB\)](#).

Where do I find out more?

For more information on apprenticeships visit www.apprenticeship.ie

The website is packed with information about becoming an apprentice. You will find a full list of all available apprenticeships as well as the contact details for your local ETB. The website also lists employers that are currently looking to take on apprenticeships. You can also call the dedicated helpline for free on **1800 794 487**. Open 12pm-6pm Monday-Friday.

We hope you've learned something more about apprenticeships and the great opportunities they can offer to all kinds of people whether they're just finishing school or are looking for a change of pace.

LIST OF POPULAR JOB SEARCH SITES



<https://ie.jobbie.org/jobs/Waterford>

<https://www.recruitireland.com/search/?County=Waterford>

<https://waterfordjobs.ie/>



<https://www.rezoomo.com/>

<https://www.glassdoor.ie/index.html>



<https://www.jobalert.ie/jobs-by-county>



<https://www.irishjobs.ie/>



<https://www.jobsdodeal.ie/>



<https://www.adverts.ie/jobs>



<https://ie.indeed.com/jobs-in-Waterford>



<https://www.jobsireland.ie/#/home>



<https://www.clsrecruitment.ie/>



<http://www.sherlockrecruitment.com/jobs/construction/>



<https://www.gumtree.ie/s-jobs/waterford/v1c813300023p1>



<http://wardpersonnel.com/>



<https://www.frsrecruitment.com/>



<https://www.jobs.ie/>



<https://www.monster.ie/>



<https://ie.jobtome.com/jobs?what=&where=waterford>



<http://www.wlrfm.com/jobs/>



<http://www.beat102103.com/jobs/>



<https://www.cpl.ie/Home>

THE IRISH NATIONAL ORGANISATION OF THE UNEMPLOYED



The Irish National Organisation of the Unemployed

2h

If you need help navigating the social welfare system call our Welfare Assistance Team at (01) 8560088. They will be able to talk you through the ins and outs of the system. You can also leave a message on our website and have someone get back to you at a later stage. <https://www.inou.ie/about/contact-us/>



INO

Welfare Rights & Back to Work
Supports Information Helpline
(01) 8560088

Free - Confidential - Impartial Information Services

[Advertised on facebook](#)

Benefit of Work Estimator

Check now

You do not need a [MyGovID](#) to use this service.

What is the Benefit of Work Estimator ?

The benefit of work estimator for jobseeker and one parent family payments shows how starting work or increasing your hours could affect your payment. The estimate will include income from your employment and any social welfare payments you may still be entitled to.

Who can use the Estimator?

This tool is anonymous and the information you provide cannot be used to identify you by the Department of Social Protection.

What Information does it need?

You will need to provide information on:

**Social Welfare Scheme.**

You will need to tell the estimator what scheme you are currently being paid on.

**Family and Children.**

You will need to select your relationship status and if you have dependent children.

**Job Details.**

You will need to provide information on your current job, if applicable, and you will need to know how many days, hours and the rate of pay for the new job.

Benefit of work estimator

Check now

You do not need a [MyGovID](#) to use this service.



FURTHER EDUCATION & TRAINING COURSE HUB

Fetchcourses.ie was developed by SOLAS, the Further Education & Training Authority, in partnership with Education and Training Boards Ireland (ETBI) and other Further Education and Training providers.

**ANYONE WHO HAS LOST THEIR JOB DUE TO
COVID-19 CAN NOW ACCESS
FREE TRAINING ON-LINE.**

TO VIEW ALL COURSES AVAILABLE PLEASE LOG ONTO:

WWW.FETCHCOURSES.IE

SELECT LOCATION AS ONLINE

Examples of courses to choose from include :

ECDL, Photoshop, Excel, Word, Advanced Word, Advanced Excel,
Graphic Design & Illustration using Adobe, Powerpoint, CompTIA A+,
Python Programming and many more.

ON-LINE AND TELPHONE TUTOR SUPPORT AVAILABLE FOR DURATION OF TRAINING

FOR MORE INFORMATION PLEASE CONTACT:

e-COLLEGE LEARNING - Contact - Fiona Lester - 1800 855 831

CLIENTS OF THE DUNGARVAN/LISMORE LOCAL EMPLOYMENT SERVICE

PLEASE CONTACT YOUR CASE OFFICER - NIAMH KUHNE - 058 44077

SPRINGBOARD



Waterford Wexford Adult Educational Guidance Service

June 17 at 3:00 PM

...

WHAT is Springboard-?

AM I eligible?

WHAT courses are available?

HOW much will I have to pay?

Springboard+ provides free higher education courses for people who are unemployed (or were self-employed) and those looking to return to the workforce. You can also apply for a Springboard+ course if you are working, but you must pay a 10% contribution towards the course fee.

Most courses will be part-time for one year. However, some courses will be for up to 2 years. Visit www.springboardcourses.ie to see all courses currently accepting applications.



SPRINGBOARD+

www.springboardcourses.ie

**FREE
SUBSIDISED
COURSES
AVAILABLE**

springboardcourses.ie



SPRINGBOARD+ 2022/23 TRAINING COURSES

Springboard+ offers free / 90%-funded courses in areas of high skills need including Science, Hospitality, Engineering, Computing and Business. Courses are typically up to one year and are open to employed, unemployed and returners.

SETU Waterford has been funded for the following courses this year 🌟

Springboard+ 2022/23

South East Technological University
www.setu.ie



| BUSINESS MANAGEMENT MARKETING | LEVEL | CREDITS | LOCATION |
|---|-------|---------|------------------------|
| Master of Business Internationalisation | 9 | 90 | Waterford |
| Postgraduate Diploma in Digital Marketing Practice | 9 | 60 | Waterford |
| Master of Science in Supply Chain Management | 9 | 90 | Carlow/Wicklow/Wexford |
| Certificate in Workforce Management | 9 | 30 | Carlow/Wicklow/Wexford |
| Higher Diploma in Digital Marketing with Analytics | 8 | 60 | Carlow |
| Higher Diploma in Business in Supply Chain Management | 8 | 60 | Carlow/Wicklow/Wexford |
| Higher Diploma in Arts in Digital Media Design | 8 | 60 | Carlow/Wicklow/Wexford |
| Certificate in Regulated Investment Funds | 8 | 20 | Waterford |
| Diploma in Lean Fundamentals | 7 | 60 | Waterford |

| COMPUTING | LEVEL | CREDITS | LOCATION |
|--|-------|---------|-----------|
| MSc in Information Technology Management | 9 | 90 | Carlow |
| MSc in Cybersecurity, Privacy and Trust | 9 | 90 | Carlow |
| Higher Diploma in Computer Science | 8 | 90 | Waterford |
| Higher Diploma in Business Systems Analysis (2-year online) | 8 | 60 | Waterford |
| Higher Diploma in Science Computing (Systems and Information Technologies Services) (2-years online) | 8 | 90 | Carlow |

| SCIENCE | LEVEL | CREDITS | LOCATION |
|--|-------|---------|-----------|
| MSc in Medical Device Regulatory Affairs | 9 | 90 | Carlow |
| Master of Science in Pharmaceutical Regulatory Affairs | 9 | 90 | Carlow |
| Certificate in International Regulatory Affairs (Postgraduate) | 9 | 10 | Waterford |

| ENGINEERING MANUFACTURING CONSTRUCTION | LEVEL | CREDITS | LOCATION |
|--|-------|---------|------------------------|
| Master of Science in Environmental, Health and Safety Management | 9 | 90 | Carlow/Wicklow/Wexford |
| Certificate in BIM and Construction Project Management | 9 | 30 | Carlow |
| Bachelor of Science (Honours) in Construction Management | 8 | 60 | Waterford |
| Bachelor of Science in Construction Site Management | 7 | 60 | Waterford |
| Bachelor of Science in Energy Management (Buildings) | 7 | 60 | Carlow |
| Certificate in Automation Engineering | 7 | 15 | Waterford |
| Certificate in Energy Sustainability | 7 | 10 | Carlow |

| TOURISM AND HOSPITALITY | LEVEL | CREDITS | LOCATION |
|--|-------|---------|-----------|
| Diploma in Restaurant Management | 7 | 60 | Waterford |
| Certificate in Culinary Skills | 6 | 60 | Waterford |
| Certificate in Plant Based Cooking & Sustainable Practices | 6 | 35 | Waterford |

CONTACT DETAILS

Carlow | Wexford | Wicklow
Lifelong Learning Office
springboard.cw@setu.ie
059 9175280

Eoin O'Brien
eoin.obrien@setu.ie
059 917 5278

Waterford

Lifelong Learning Office
springboard.wd@setu.ie
051 302040

Joan Mangan
joan.mangan@setu.ie
051 302849

Lorraine Quirke
lorraine.quirke@setu.ie
051 834137

Springboard+ is co-funded by
the Government of Ireland
and the European Union.



Advertised on facebook

CONSTRUCTION GROUND WORK SKILLS TRAINING COURSE THROUGH WATERFORD WEXFORD EDUCATION & TRAINING BOARD

Would you like to pursue a career as a skilled construction operative? Are you considering an apprenticeship in one of the construction trades?
Construction Ground Work Skills course will be a great starting point. On successful completion of this course, learners will achieve a QQI Level 4 Special Purpose Award in Construction Ground Work Skills.

Location: Kilcohan Training Centre Waterford
☎ 051-301500 051-301555

Start Date: 19/09/2022
✉ recruit@wwetb.ie

Duration: 10 weeks



WWETB Waterford and Wexford Education and Training Board

Would you like to pursue a career as a skilled construction operative? Are you considering an apprenticeship in one of the construction trades?

Construction Ground Work Skills course will be a great starting point. On successful completion of this course, learners will achieve a QQI Level 4 Special Purpose Award in Construction Ground Work Skills.

Location: Kilcohan Training Centre Waterford

Start Date: 19/09/2022

Duration: 10 weeks

☎ 051-301500 051-301555

✉ recruit@wwetb.ie

For further information or to apply please visit:

<https://www.fetchcourses.ie/course/finder...>



wwetb

Waterford and Wexford Education and Training Board
Quality Standard Approved
Education and Training Board

Construction Ground Work Skills starting in September 2022

Modules Include:

- Concreting
- Safety And Manual Handling
- Kerb Flag And Pavior Laying
- Safepass
- Career Planning

Contact : recruit@wwetb.ie

Phone: 051-301500 / 301555

www.fetchcourses.ie

code: 358260

www.wwetb.ie

Course Location:
Kilcohan Training Centre (WWETB)
Waterford

Advertised on facebook



UPCOMING BTEI TRAINING COURSES IN PORTLAW THROUGH WATERFORD WEXFORD EDUCATION & TRAINING BOARD

Upcoming BTEI courses in September in Portlaw.. for more information contact 051 393794/086 0460986 or email maryupton@wwetb.ie also you can apply online through www.fetchcourses.ie



Waterford Wexford Adult Educational Guidance Service

Upcoming BTEI courses in September in Portlaw.. for more information contact 051 393794/086 0460986 or email maryupton@wwetb.ie also you can apply online through www.fetchcourses.ie

PORTLAW - Monday Start Date 5th September

| Time | Course | Code | Weeks |
|-----------------|--|-----------|-------|
| 9:15am - 2:00pm | Group 1 Care Support and Palliative Care QQI 5 Healthcare Support Award YR 2 | HC-352766 | 32 |

PORTLAW - Tuesday Start Date 6th September

| Time | Course | Code | Weeks |
|------------------|-----------------------|-----------|-------|
| 9:15am - 11:15am | Book Keeping QQI 4 | OS-360039 | 32 |
| 11:30am - 1.30pm | Word Processing QQI 3 | OS-360042 | 20 |

PORTLAW - Wednesday Start Date 7th September

| Time | Course | Code | Weeks |
|-----------------|--|-----------|-------|
| 9:15am - 2:00pm | Group 1 Care Support and Palliative Care QQI 5 Healthcare Support Award YR 2 | HC-352770 | 32 |

Who can take part in these courses?

BTEI is available and fully funded to those where any of the following are relevant:

- No leaving certificate
- Current Medical Card
- Social Welfare Payment or signing credits
- CE Scheme Participant
- A dependant of a Social Welfare Recipient
- Those employed that need skills for their work under Skills to Advance

Talk to the coordinator regarding your eligibility for courses.

Advertised on facebook

DUNGARVAN COLLEGE OF FURTHER EDUCATION TRAINING COURSES

Are YOU considering a new career path??? Huge range of 9-month courses available at Dungarvan College for Sept 2022.

All courses are suitable for adults hoping to upskill or change their career options. It also can lead directly into employment and progression onto Higher Education..



Dungarvan College - Further Education

June 11 at 8:08 PM

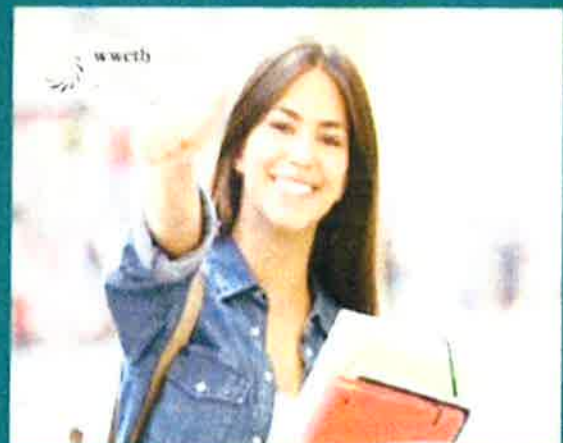
...



DUNGARVAN COLLEGE OF FURTHER EDUCATION

Full time course QQI L5 & 6

- Sports Science, Sports Exercise & Leisure Management
- Business & IT
- Accounting Technician
- Engineering
- Lab Assistant
- CAD
- Pre Apprenticeship
- Healthcare
- Pre Nursing
- Community Care
- SNA/Childcare
- Graphic Design
- Art Portfolio
- Beauty Therapy



[Advertised on facebook](#)

START YOUR OWN BUSINESS TRAINING COURSE THROUGH WATERFORD WEXFORD EDUCATION & TRAINING BOARD



Waterford Wexford Adult Educational Guidance Service

START YOUR OWN BUSINESS: ENTERPRISE STUDIES

Start Date: 01/09/2022

Location: Kilmacthomas Co. Waterford

This is a full time programme, where students spend a minimum of 12 hours per week in a classroom setting where they gain the knowledge and skills to start a business. They are also required to complete Work Practice/Mentoring. A full time commitment is required from the student through a combination of onsite class attendance and work practice in order to achieve their objective of starting their own business.

For more information click on link or to apply online

<https://www.fetchcourses.ie/course/finder...>

Start Your Own Business Course



wwetb

Waterford Wexford Education & Training Board
100, The Esplanade, Waterford, Ireland
T: 051 294680
E: info@wwetb.ie



Contact: patriciadaly@wwetb.ie

051 294680

[Advertised on facebook](#)

BTEI TRAINING COURSES IN CAPPOQUIN THROUGH WATERFORD WEXFORD EDUCATION & TRAINING BOARD

BTEI Cappoquin Classes for September.. With lots to choose from..if you are considering upskilling, retraining or returning to Education these flexible part time modules are ideal.

For more information contact antoniasplini@wwetb.ie or to apply online go to www.fetchcourses.ie

Upcoming BTEI Courses in Cappoquin WWETB Further Education & Training Centre Twig Bog, Mill St Cappoquin, Co. Waterford.

Healthcare Modules - QQI level 5

| | | | |
|--------------------------------|------------|------------|----------------|
| Care of the Older Person | Aug. - Dec | Wednesdays | 11:30 - 1:30pm |
| Infection Prevention & Control | Aug. - Dec | Mondays | 09:15-11:15am |
| Communications | Aug. - Dec | Mondays | 11:30 - 1:30pm |
| Work Experience | Jan. - May | Mondays | 09:15-11:15am |
| Safety & Health at Work | Jan. - May | Mondays | 09:30-11:15am |
| Care Skills | Jan. - May | Wednesdays | 11:30-1:30pm |
| Palliative Care | Jan. - May | Wednesdays | 09:15-11:15am |
| Care Support | Aug. - Dec | Wednesdays | 09:15-11:15am |

Childcare/SNA Modules - QQI level 5

| | | | |
|--------------------------------|--------------|---------|----------------|
| Children with Additional Needs | Sept. - Feb. | Fridays | 9:15-11:15am |
| Special Needs Assisting | Sept. - Feb. | Fridays | 11:30 - 1:30pm |

Culinary Skills Modules- QQI Level 4

| | | | |
|-------------------------------|--------------|-----------|---------------|
| Menu Planning | Jan. - May | Tuesdays | 12:00-1:30pm |
| Culinary Techniques | Sept. - May | Tuesdays | 9:15-11:45am |
| Catering Operations & Systems | Sept. - Dec. | Tuesday | 12:00-1:30pm |
| Workplace Safety | Sept.-Feb. | Thursdays | 09:15-11:15am |
| Personal Effectiveness | Oct.- May | Thursdays | 09:15-11:15am |

Employment Skills -QQI Level 4

| | | | |
|-------------------------------|--------------|------------|-----------------|
| Communications | Jan. - Dec. | Wednesdays | 09:15 - 11:15am |
| Maths | Sept. - Feb. | Thursdays | 11:30 - 1:30pm |
| Career Planning | Jan. - March | Wednesdays | 09:15 - 11:15am |
| Personal Effectiveness | Oct - May | Thursday | 09:15 - 11:15am |
| Customer Service | April - May | Wednesdays | 09:15 - 1:30pm |
| Workplace Safety | Sept. - Feb. | Thursdays | 09:15 - 11:15am |
| Work Experience | Jan. - March | Wednesdays | 11:30 - 1:30pm |
| Information Technology Skills | Sept.- Dec. | Wednesdays | 1:30 - 1:30pm |

Tourism with Business & IT Modules - QQI Level 5

| | | | |
|--------------------------------------|-------------|-----------|------------------|
| Tourism Information & Administration | Aug. - May | Tuesdays | 09:15- 11:15am |
| Customer Service | Aug.- May | Thursdays | 09:15 - 1 1:15am |
| Bookkeeping Manual & Computerised | Sept. - May | Thursdays | 11:15 - 1:30pm |
| Heritage | Aug. - May | Tuesdays | 11:30- 1:30pm |

Management

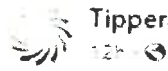
| | | | |
|------------------------------------|----------|---------|--------------|
| Supervisory Management QQI Level 6 | Oct- May | Fridays | 09:15-1:30pm |
|------------------------------------|----------|---------|--------------|

NOTE: TIMES DATES SUBJECTS TO CHANGE

A Path to Learning for All

Advertised on facebook

TRAINING DELIVERY AND EVALUATION TRAINING COURSE THROUGH TIPPERARY EDUCATION & TRAINING BOARD



Tipperary Education and Training Board

Starts September

Clonmel

2 evenings p/wk for 10 weeks

Apply here: <https://bit.ly/3toLJI4>

Enquiries to Siobhán 051 640742

Email: eveningtraining@tipperaryetb.ie

#EveningTrainingCourse #Clonmel #Trainthetrainer



TRAINING DELIVERY AND EVALUATION COURSE

CLONMEL

SEPTEMBER
2 EVENINGS PER WEEK

Contact:

eveningtraining@tipperaryetb.ie

051 640742



Advertised on facebook

BTEI TRAINING COURSES IN DUNGARVAN THROUGH WATERFORD WEXFORD EDUCATION & TRAINING BOARD

BTEI evening classes for Dungarvan for September.

Childcare modules and Healthcare modules available..

Contact antoniasplini@wwetb.ie for more information or apply
online through www.fetchcourses.ie



Back to Education Initiative



wwetb

Waterford Wexford Education & Training Board
Supporting Learning, Skills & Employment

What is the Back to Education Initiative: The Back to Education Initiative (BTEI) provides part-time courses for young people over 16 yrs. and adults, aimed principally at those who have not completed Leaving Certificate or equivalent qualification. It gives individuals the opportunity to combine a return to learning with family, work, and other responsibilities. **FREE TUITION** is available for those with no leaving certificate or current medical card or in receipt of Social Welfare Benefit/Allowance

Upcoming BTEI Courses in Dungarvan (Evening classes- 6:30- 9:00pm)

Early Childhood Care and Education Modules

- Children with Additional Needs Module- Level 5- 360021- Monday 6:30-9pm
- Special Needs Assistant Module- Level 5 – 360018 Monday 6:30-9pm-
- Supervision in Early Childhood Care- Level 6- 360205- Wednesday 6:30-9pm
- Communications & Work Experience- Level 6- 360208- Monday 6:30-9pm



HEALTHCARE SUPPORT QQI Level 5 – Modules

- Care Skills- Y1- 360287- Wednesday- 6:30-9pm
- Care of the Older Person- Y1- 360288 Wednesday 6:30-9pm
- Safety & Health at Work- Y1- 359194- Thursday- 6:30-9pm
- Infection Prevention & Control- Y1- 360289- Thursday- 6:30-9pm
- Care Support- Y2- 36030- Thursday 6:30-9pm
- Palliative Care- Y2- 360305- Thursday 6:30-9pm
- Communications - Y2- 360306- Tuesday 6:30-9pm
- Work Experience- Y2 354563- Tuesday 6:30-9pm

The following timetables have the awards separated into components. If you want to work towards a major award, speak to the coordinator. Courses will run once sufficient applications are received. Changes may occur to the timetable before the September start date. Applicants will be informed where relevant.

A Path to Learning for All

Advertised on facebook

PAINTING & DRAWING TRAINING COURSE THROUGH WATERFORD WEXFORD EDUCATION & TRAINING BOARD

Interested in Painting & Drawing then this module is the one for you. 🎨

This is a part time QQI level 4 course
Thursday September 1st 9:15am - 1:45pm
Dungarvan Adult Education Centre Wolfe Tone Road.
Contact: maryupton@wwetb.ie or phone: 0860460986



wwetb



PART TIME DRAWING QQI 4 AND PAINTING QQI 4 CLASSES FOR DUNGARVAN

This new course is delivered as part of the Back to Education initiative at Wolfetone Road Campus

Eligibility Criteria applies and courses are fully funded if you meet any of the following

- No leaving certificate
- Current Medical Card
- Social Welfare Payment or signing credits
- A dependent of a Social Welfare Recipient
- CE Scheme Participant

Classes will be delivered On Thursday commencing on September 1st 2022 from 9.15am to 1.45pm and will run until May 2023.

Contact Mary Upton by email to maryupton@wwetb.ie or by phone to 086 0460986



Advertised on facebook

**VTOS TRAINING COURSES IN DUNGARVAN
THROUGH WATERFORD WEXFORD EDUCATION & TRAINING BOARD**



Waterford Wexford Adult Educational Guidance Service ...

19h · 🌐

Dungarvan VTOS is now taking enrollment for the course starting in September.

340197 - OFFICE SKILLS - LEVEL 4 GENERAL LEARNING

340281 - ART GENERAL LEARNING LEVEL 4 (NO FEES)

This is a full time course Monday - Friday...

VTOS Dungarvan



wweth

340197 - OFFICE SKILLS - LEVEL 4

340281 - ART GENERAL LEARNING LEVEL 4

Taking Applications for September 2022



For more information contact alice@occonor@wweth.ie
or to apply online go to www.fetchcourses.ie
telephone 058 45757

Advertised on facebook

**CUSTOMER SERVICE TRAINING COURSE - DUNGARVAN
THROUGH WATERFORD WEXFORD EDUCATION & TRAINING BOARD**



Waterford Wexford Adult Educational Guidance Service ...

4h

SKILLS TO COMPETE CUSTOMER SERVICE QQI L5 (EVENING)

Start Date: 20/09/2022

End Date: 12/11/2022

Duration: 8 Weeks

Location: Dungarvan

(times and dates subject to changes)

On completion of the training programme learners will be able to provide effective customer service within a range of environments.

Contact:

051 301564/ 051 301593

email: catherineprendergast@wwetb.ie

course code: 337297

QQI LEVEL 5 Customer Service



wwetb

Dungarvan

Tuesday 20th of September for 8 weeks

(evening class)



For more information contact catherineprendergast@wwetb.ie or
to apply online go to www.fetchcourses.ie
Course Code: 337297

Advertised on facebook

BUS DRIVING TRAINEESHIP - TRAINING COURSE THROUGH WATERFORD WEXFORD EDUCATION & TRAINING BOARD

Bus Driving Traineeship - 

This programme will provide trainees with the skills and related knowledge in the rules of the road, driving a LPSV, customer service, documentation, first aid, manual handling fire safety, digital tachograph and technical standards for LPVS.

★ Start Date: 05/09/2022

★ End Date: 21/04/2023

★ Duration: 33 Weeks

★ Location: Dungarvan

★ Contact: recruit@wwetb.ie



Waterford
Wexford
Education & Training Board

BUS DRIVING TRAINEESHIP

Course Description

The programme is designed to provide trainees with the skills and related knowledge in the rules of the road, driving a LPSV, customer service, documentation, first aid, manual handling fire safety, digital tachograph and technical standards for LPVS.

CERTIFICATION

• Certificate of Professional Competence (CPC) issued by the Department of Transport
• Department of Environment, Climate and Communications
• Driver Certificate of Professional Competence (CPC)
• LPSV Licence (Competent Certificate for Customer Service) (CSCS)
• Workplace Safety
• First Aid Response (First Aid)
• Work Practice (W.P.)
• The Horizontal Emergency Brake (H.E.B.) (H.E.B. is a standard for the vehicle)

COURSE MATERIALS

• LPSV Licence (Competent Certificate for Customer Service) (CSCS)

COURSE CONTENT

• Introduction
• Manual Handling and First Aid
• Driving the Category B Vehicle
• The Category B Vehicle
• Digital Tachograph for LPSV
• Documentation for LPSV
• Technical Standards for LPSV
• Customer Service (CSCS)
• Workplace Safety
• First Aid Response (First Aid)
• Work Practice (W.P.)
• The Horizontal Emergency Brake (H.E.B.) (H.E.B. is a standard for the vehicle)

JOB OPPORTUNITIES

• The programme is designed to provide trainees with the skills and related knowledge in the rules of the road, driving a LPSV, customer service, documentation, first aid, manual handling fire safety, digital tachograph and technical standards for LPVS.

LEARNER ENTRY REQUIREMENTS

• Education: Minimum of 10 years of education (or equivalent)
• Age: Minimum of 18 years of age
• Aptitude: The programme is designed to provide trainees with the skills and related knowledge in the rules of the road, driving a LPSV, customer service, documentation, first aid, manual handling fire safety, digital tachograph and technical standards for LPVS.
• Previous experience: The programme is designed to provide trainees with the skills and related knowledge in the rules of the road, driving a LPSV, customer service, documentation, first aid, manual handling fire safety, digital tachograph and technical standards for LPVS.
• Special Requirements: The programme is designed to provide trainees with the skills and related knowledge in the rules of the road, driving a LPSV, customer service, documentation, first aid, manual handling fire safety, digital tachograph and technical standards for LPVS.



NEXT COURSES

Course starting in
Dungarvan 2022

For further details contact
051-301500
087-1958761
or
recruit@wwetb.ie

Advertised on facebook

**HGV TRAINING PROGRAMME TRAINING COURSE
THROUGH WATERFORD WEXFORD EDUCATION & TRAINING BOARD
PROFESSIONAL HGV TRAINING PROGRAMME**

📍Dungarvan - 5th of September 2022

Full time course - Monday - Friday

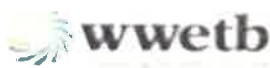
👉DRIVING HGV RIGID & ARTIC BODY 👉30 WEEKS

<https://www.fetchcourses.ie/course/finder...>

Course Code: 342270 Waterford Wexford Training Services

For further details contact ☎051-301500 087-1958761

📧recruit@wwetb.ie



Waterford Wexford
Education & Training Board

**PROFESSIONAL HGV
TRAINING PROGRAMME**

The exact structure of the course will depend on the evolving nature of Covid-19 public health advice



Background to the Programme

Course Description

CERTIFICATION

• Certificate of Competence (CCC)
• Driving Rigid (Rigid) - Category 1
• Driving Artic (Artic) - Category 2
• Driving Trailer (Trailer) - Category 3
• Driving Combination (Combination) - Category 4
• Driving Rigid (Rigid) - Category 5
• Driving Artic (Artic) - Category 6
• Driving Trailer (Trailer) - Category 7
• Driving Combination (Combination) - Category 8
• Driving Rigid (Rigid) - Category 9
• Driving Artic (Artic) - Category 10
• Driving Trailer (Trailer) - Category 11
• Driving Combination (Combination) - Category 12

COURSE CONTENT

• Introduction to HGV Training & the Industry - Transport Legislation
• Driving Rigid (Rigid) - Category 1
• Driving Artic (Artic) - Category 2
• Driving Trailer (Trailer) - Category 3
• Driving Combination (Combination) - Category 4
• Driving Rigid (Rigid) - Category 5
• Driving Artic (Artic) - Category 6
• Driving Trailer (Trailer) - Category 7
• Driving Combination (Combination) - Category 8
• Driving Rigid (Rigid) - Category 9
• Driving Artic (Artic) - Category 10
• Driving Trailer (Trailer) - Category 11
• Driving Combination (Combination) - Category 12

JOB OPPORTUNITIES

LEARNER ENTRY REQUIREMENTS



NEXT COURSES

Starting in various
locations across
Waterford & Wexford
2022/2023

For further details contact
051-301500
087-1958761
or
recruit@wwetb.ie

www.fetchcourses.ie

www.waterfordwexford.ie

Waterford Wexford Training Services

Advertised on facebook

UPCOMING TRAINING IN DUNGARVAN THROUGH WATERFORD TRAINING CENTRE



**FURTHER EDUCATION &
TRAINING COURSE HUB**



Ireland's European Structural and
Investment Funds Programmes
2014-2020
Co-funded by the Irish Government
and the European Union



EUROPEAN UNION
Investing in your future
European Social Fund

[About FET](#) [Course Finder](#) [Types of Courses](#) [Grants & Allowances](#) [Adult Education Guidance](#)

[Sign In](#) [Register](#)

[Home](#) > [Course Finder](#)

| REF | COURSE TITLE | PROVIDER | LOCATION | STARTS |
|-------|---|---------------------------|-----------|------------|
| Q45 | CV and Interview Preparation | Waterford Training Centre | Dungarvan | 23/08/2022 |
| Q97 | Safe Pass | Waterford Training Centre | Dungarvan | 01/09/2022 |
| 09807 | Professional HGV Training Programme (Traineeship) | Waterford Training Centre | Dungarvan | 05/09/2022 |
| 07145 | RTITB Forklift Truck Operator | Waterford Training Centre | Dungarvan | 05/09/2022 |
| 07176 | Bus Driving D Licence | Waterford Training Centre | Dungarvan | 05/09/2022 |
| 09429 | First Aid Responder PHECC | Waterford Training Centre | Dungarvan | 13/09/2022 |
| 09892 | Customer Service | Waterford Training Centre | Dungarvan | 20/09/2022 |

PLEASE NOTE THE ABOVE COURSE START DATES ARE SUBJECT TO CHANGE

**ALL OF THE ABOVE COURSES ARE ORGANISED AND DELIVERED BY THE WWETB
THE LOCAL EMPLOYMENT SERVICE CAN ADD YOUR NAME TO THE "WAITING LIST"
FOR YOUR COURSE OF PREFERENCE**

**TO VIEW ALL TRAINING OPPORTUNITIES AND COURSE PROFILES PLEASE LOG ONTO
WWW.FETCHCOURSES.IE**

IF YOU WANT YOUR NAME TO BE ADDED TO THE WAITING LIST FOR ANY OF THE ABOVE
COURSES **PLEASE CONTACT YOUR CASE OFFICER**

CLIENTS OF THE LES - LOCAL EMPLOYMENT SERVICE IN DUNGARVAN / LISMORE
CAN PHONE

NIAMH KUHNE OR PAULA HENNESSY - LOCAL EMPLOYMENT SERVICE - TEL: 058 44077



An Roinn Coimírce Sóisialaí
Department of Social Protection



Comhpháirtíocht Leader Waterford Leader
Port Láirge Partnership