

WEST WATERFORD LOCAL EMPLOYMENT SERVICE

SUPPORT SERVICE FOR THE UNEMPLOYED

WORKING UNDER CONTRACT FOR THE DEPARTMENT OF EMPLOYMENT AFFAIRS AND SOCIAL PROTECTION

JOB VACANCIES & FREE LOCAL TRAINING
WEDNESDAY 17TH AUGUST 2022

OUR OFFICES ARE NOW OPEN TO THE PUBLIC

THIS JOB PACK CAN BE ACCESSED WEEKLY VIA:

OUR OFFICES: PRESENTATION BUILDING, MITCHELL STREET, **DUNGARVAN.**
WLP OFFICES, LISMORE BUSINESS PARK, **LISMORE.**

VIA EMAIL: PLEASE EMAIL OUR OFFICE AND YOUR NAME CAN BE
ADDED TO OUR WEEKLY MAIL-OUT DATABASE.

ONLINE: WWW.WLP.IE
SELECT **JOBSEEKER TAB** HIT **LOCAL JOB ADVERTS**

FOR DAILY JOB VACANCY UPDATES
PLEASE LIKE US ON FACEBOOK ~ COUNTY WATERFORD LES

OUR CONTACT DETAILS ARE:

PHONE: 058 44077
TEXT: 086 787 0872 or 086 035 8615
Email: westwaterford.les@WLP.ie

STAFF CONTACTS : NIAMH KUHNE / PAULA HENNESSY



DUNGARVAN LEADER, FRIDAY, AUGUST 19, 2022

PART TIME OFFICE CLERK REQUIRED

FOR SMALL BUSINESS IN CAPPOQUIN AREA

Office experience and fluent English essential along
with clean driving licence.

Queries /CVs to:
info@nhor@gmail.com

Replacement Window & Door Installers

SUB-CONTRACTORS ARE REQUIRED TO FIT
REPLACEMENT WINDOWS AND DOORS.

Candidates must have;

- Insurance
- Safe Pass

Previous experience as a Window & Door
installer is desirable.

The successful candidates must be self
employed, have their own transport and be
willing to travel.

Full product training will be provided.

Immediate start and long term work
available.

If you are interested in applying for this position,
please forward a current CV via email to
personnel@munsterjoinery.ie



MUNSTER JOINERY

www.munsterjoinery.ie

SITUATIONS VACANT

PLASTERER REQUIRED — For
busy contracting company.
Please reply by email to:
plasteringjob@outlook.com (26/8/R)

TRACTOR DRIVER —
Experienced Tractor Driver
required, full time position. Contact
Kieran Hallahan, Cappoquin. 087
2549759. (26/8)

PERSON REQUIRED to take
care of a young boy in his own
home (Abbeyside) after
Preschool 3-4 days a week. May
suit creche/ECCE/AIM staff. 087
6850843. (2/9/R)

APPLE PICKERS WANTED —
For September / October,
Cappoquin area. Text Whatsapp
087 9889017. (2/9/R)



General Garden Centre Assistant

BACKGROUND

Clarenbridge Garden Centre is a long established business. We are based in Co. Galway and Co. Waterford operating an exclusive and expanding garden centre. We have a vacancy for a General Garden Assistant in our Co. Waterford branch to strengthen the team and support us in growing the business further.

JOB PURPOSE

Be a valuable member of Clarenbridge Garden Centre team by being knowledgeable in the store's products and competent in all the store's roles.

KEY RESPONSIBILITIES

- Provide a high standard of customer service;
- Keep the product offering maintained;

EXPERIENCE & QUALIFICATIONS

- Previous horticultural experience and working in a Garden Centre
- Sales driven

SKILLS & TRAITS SOUGHT

- A keen interest in gardening;
- Customer service orientated, with a professional and friendly approach;
- A hands-on, passionate and enthusiastic person with a strong work ethic;
- Flexibility, as regular weekend work is required;
- Willingness to lift products (some manual handling, within the constraints of HSA guidelines, is inevitable).

SALARY: DOE

BENEFITS: Employee discount & on-site parking

EXPECTED START DATE: As soon as possible

Please send CV's to : magda@clarenbridgегardencentre.ie
or contact us on 086 140 81 94

EXPERIENCED TRACTOR DRIVER REQUIRED – Full-time position. Contact: Kieran Hallahan, Cappoquin. Tel. (087) 2549759. (26-8)

APPLE PICKERS WANTED FOR SEPTEMBER AND OCTOBER – Cappoquin area. Contact, TXT or WhatsApp (087) 9889017. (26-8)

CHILDMINDER REQUIRED TO MIND THREE CHILDREN – Two afternoons per week. Car essential to collect from school. Dungarvan area. Tel. (086) 3803873. (26-8)



LABORATORY ASSISTANT (FULL-TIME)

EUROFINS FOOD TESTING IRELAND LTD.

Monday to Friday 08:00-16:15 or 09:00-17:15

Eurofins Food Testing Ireland Ltd is an analytical testing facility which helps make food safe for consumption. The role of Laboratory Assistant is to work as part of a team providing a support service to busy laboratory departments in an efficient, confidential and quality orientated manner.

It is not necessary to have a science qualification as full training will be given

We are looking for someone who has:

- Ability to work well under pressure and multitask.
- Excellent attention to detail.
- Flexible
- Multitask
- Confident approach with strong interpersonal and communication skills.
- A good knowledge of computers is essential.

Please click on the link further information and to apply for this position https://smrtr.io/bcm_L or send your CV to jobs@eurofins.ie

POSITION AVAILABLE FOR Early Years AIM Support Assistant

We are looking for a kind and friendly, hardworking enthusiastic person to join our team.

- The role is on providing guidance, assistance and support to the room and individual children as needed.
- To assist the room leader to ensure the smooth running of our morning class.
- The ideal candidate should have excellent communication skills, work well on own initiative, enjoy working with young preschool children.
- Qualification must be full QQI level 5/6 or degree in Early childhood studies with experience.
- Experience in additional education needs is a distinct advantage this position is for 38 weeks school Calendar, 20 hours per week Monday-Friday

Please apply with cover letter, CV, and copy of certificate as soon as possible to Box No. 8071

Closing date 23/08/2022

Staff

**Wanted at
Garvey's Centra,
Coolagh**

Centra
LIVE EVERY DAY

1 x Deli Assistant

**MUST BE FULLY FLEXIBLE TO WORK
BOTH WEEK DAYS AND WEEKENDS**

Please apply by email to:

Coolagh@garveyscentra.ie
or drop your CV in-store



BioPharma
Product Testing

Eurofins BPT (Biopharmaceutical Technology) Dungarvan are actively recruiting for a

STORES ASSISTANT

to join our team on a full time permanent basis.

The main purpose of this role is to ensure that purchasing stock and store controls are handled in an efficient and cost effective manner

- Manage all stock movements and follow through any discrepancies that arise.
- Receipt stock in accordance with our policies and procedures.
- Approve all packing slips for payment once stock has been reconciled.
- Process claims where required on faulty goods, late deliveries, and short deliveries
- Report to Manager on a daily basis any issues relating to goods movement.
- Organise outward packages via relevant couriers.
- Dispatch all outward goods using approved freight providers, processes and in a timely manner.
- Responsible for ensuring purchasing documentation is completed accurately, in a timely manner and organized and filed correctly in accordance with company procedures.
- This person must ensure the stores are properly organized including labelling, FIFO, stacking, correct separation of goods, tidiness, etc., so items can be identified quickly and easily.
- Responsible for maintaining procedures to maintain effective, interdepartmental communication (e.g. with accounts, administration, chemistry, microbiology). This applies both to systems and feedback on status of materials being purchased.
- Responsible for intake and labelling of all goods/supplies and for distribution to the stores or relevant areas in line with the company's procedures.

Experience & Qualifications

- Strong IT skills / Excel.
- Diligent, hard-working, takes ownership of tasks.
- Organised, accurate, with good productivity and attention to detail.
- Passionate about process improvement.
- Good communication skills both internally and externally.
- Good team player

Candidate must have a full clean driving license to be considered for this role

You can apply via link below
<https://smrtr.io/bcRzb>



RECRUITMENT OF GOVERNING BODY MEMBERS

The Governing Body of South East Technological University (SETU), Ireland's newest technological university, is inviting expressions of interest from external candidates to join its governing body. SETU looks forward to receiving expressions of interest from suitably qualified individuals interested in serving the region in this important role.

SETU is a regional university with campuses in Carlow, Waterford, Wexford, Wicklow and Kilkenny with over 18,000 learners and 2,000 staff. The university will graduate over 6,000 students each year. A defining feature of SETU is its deep collaboration with industry, enterprise and civic society in the region and beyond, nationally and internationally.

Members of the governing body perform key roles in relation to the direction, strategy and corporate governance of the university. Strong, independent judgement and objective scrutiny will be key to aiding SETU in further developing the university. SETU is keen to reflect a diversity of backgrounds and experiences in the composition of its governing body.

Potential candidates are invited to read the candidate booklet, available on SETU.ie and Stateboards.ie, submit an expression of interest, including CV and covering letter, in confidence to: governingbody@setu.ie.

**Expressions of Interest will
only be accepted by email.**

**Closing date for receipts of
expressions of interest:
7 September 2022 at 12 noon**

Tuesday, 16 August 2022

TRAMORE GOLF CLUB



Invites proposals
from suitably qualified Caterers for

The provision of Catering Services at

**Tramore Golf Club,
Newtown Hill,
Tramore,
Co. Waterford.
X91 RF2C
051 386170**

*Full Terms of Reference available from, or for a
confidential discussion please contact:*

*Pat Murray
General Manager*

Applications to manager@tramoregolfclub.com

BYRNE & McGUIRE OIL



We now wish to recruit an Oil Delivery Truck Driver. Due to the continued growth and development of our business in Waterford City and surrounding areas we now have a full-time position for an Oil Delivery Truck Driver. Byrne & McGuire Oil is a local Home Heating, Commercial and Agri Diesel Oil supply company, almost 30 years in business, where competitive pricing along with excellent customer service is our record.

This position requires someone with the following ability, experience & qualifications:

- Truck driving experience to C Licence level.
- Haz-Chem Licence an advantage but not essential as training will be provided.
- Customer Care and attention focus with a proven track record in this regard.
- Team player with ability to also work on your own.
- Organised mind-set where planning and attention to detail is a must.

Remuneration package in line with ability & experience and includes access to Pension & Health / Life Cover scheme.

Please forward your detailed CV and cover letter (in strictest confidence) to
aidan@byrnemcguireoil.ie

Closing date for applications:
2nd September 2022



Co. Waterford Farm Relief Services Ltd are hiring

Dairy Farm Assistants

The work includes:

Animal husbandry, milking, calf rearing &
general farm work.

Minimum hours: 39 hours per week

Minimum remuneration: €30,000/year

Location: Co. Waterford

Apply to: gmalone@waterfordfrs.ie

WATERFORD NEWS & STAR
AUGUST 16, 2022

BYRNE & MCGUIRE OIL



We now wish to recruit an

OIL DELIVERY TRUCK DRIVER

Due to the continued growth and development of our business in Waterford City and surrounding areas we now have a full-time position for an Oil Delivery Truck Driver. Byrne & McGuire Oil is a local Home Heating, Commercial and Agri Diesel Oil supply company, almost 30 years in business, where competitive pricing along with excellent customer service is our record.

This position requires someone with the following ability, experience & qualifications:

- Truck driving experience to C Licence level.
- Haz-Chem Licence an advantage but not essential as training will be provided.
- Customer Care and attention focus with a proven track record in this regard.
- Team player with ability to also work on your own.
- Organised mind-set where planning and attention to detail is a must.

Remuneration package in line with ability & experience and includes access to Pension & Health / Life Cover scheme.

*Please forward your detailed CV and cover letter
(in strictest confidence) to: aidan@byrnemcguireoil.ie*

Closing date for applications: 2nd September 2022



**KNOCKANRAWLEY
Resource Centre C.E.G.**

"It is better to light one candle than curse the dark"

is currently seeking to appoint

**FAMILY THERAPISTS X 2
Part-time, up to 21 hr/week**

Job Purpose & Person Specification:

The Individual, Couple and Family Therapy Service provide counselling, psychotherapy and systemic family therapy. Our team of highly qualified and registered counsellors / psychotherapists are committed to supporting those dealing with challenges such as anxiety, depression, bereavement, addiction, child and adolescent issues, post-traumatic stress, couples relationship difficulties, family mediation and conflict medication. KRC is currently seeking two part-time Family Therapists to join our team.

Applicants must have a 3-year full-time general training in the human sciences at degree level and have successfully undertaken and completed a specialist training in Family Therapy and Systemic Practice spanning, not less than four years and incorporating not less than 1600 training hours, accredited by FTAI or equivalent body.

Further Information, Detailed CV & Cover Letter to Centre Manager,

Knockanrawley Resource Centre on 062 52688 or

knockcentremanager@gmail.com. Deadline for application: August 23rd, 5pm

KRC is an equal opportunities employer.

Incorporated with limited liability No. 190219 and RCN 20027926



TUSLA
Children's Services



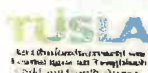
EUROPEAN UNION
Investing in your future
European Social Fund



DEPARTMENT OF EDUCATION
Supporting your child's future



Pobal
People's Voice



etb
Employment Training
Bureau



Department of Education
Supporting your child's future



Comhpháirtíocht Leader Waterford Leader
Phort Láirge Partnership

Waterford LEADER Partnership CLG

The Job - Employment Services Manager, Waterford City and County and South Tipperary Local Area Employment Services (WSTLAES).

The Person

Due to organisational growth and development, Waterford LEADER Partnership CLG together with its subcontracting partners, Waterford Area Partnership CLG and South Tipperary Development Co. CLG., is seeking to recruit to its management team a highly motivated results-driven individual. As the Manager of the Waterford and South Tipperary Local Area Employment Services, you will lead out on the building of a dynamic service in the Waterford City, County and South Tipperary local government areas. Leading a team of professional staff in the delivery of quality community-based employment services.

This is an exciting opportunity for someone passionate about improving outcomes for communities experiencing many challenges who is skilled in practical project management and delivery of results. The successful candidate will possess a high level of written and verbal communication with a strong history of success in project management and the delivery of programme objectives at a quantitative and qualitative level. This is an exciting opportunity for someone to join WLP CLG and build a career with an organisation focused on real attainment in local development.

APPLICATION PROCESS - Please send

- Detailed Letter of Application
- Curriculum Vitae
- email to: denise.walsh@wlp.ie
- Post or hand delivered marked Private and Confidential Reference to Ms Denise Walsh, WLP CLG, John Barry House, Mayfield Rd., Lismore, Co. Waterford, P51 XVP6

The closing date for receipt of applications is **4 pm Wednesday 24th August 2022** (no late applications will be accepted)

Full Job Specification can be found at [Employment Services Manager WSTLAES - Waterford Leader Partnership \(WLP\)](#)



An Roinn Coimirce Sóisialaí
Department of Social Protection



EARLY LEARNING AND CHILDCARE TEACHER – DUNGARVAN



Dungarvan College - Further Education

3d

...

Job opportunity for an Early Learning and Childcare teacher at Dungarvan College

Waterford & Wexford Education & Training Board

Bord Oideachais & Ollscoolaí Phort Láirge & Loch Garman

WWETB invites applications for the following post which may arise for the academic year 2022/2023, subject to the Director of Redeployment agreeing to the posts being filled, following completion of the 2022 scheme.

Teacher of

- **Early Learning and Care (ELC) at Dungarvan College. Fixed Term Contract covering a Job Share for the academic year up to 31/08/2023. 20 hours per week.**
- Teaching staff will hold a relevant major award at NFQ level 7 or higher and either a teaching qualification or five or more years of teaching experience on programmes designed to prepare learners for practice in the ELC sector
- The subjects for ELC are as follows. Holistic Care of Children 2hrs; Social Care 2hrs; Human Growth 4 hrs; Early Childhood Growth and Development 3.33 hrs; Intellectual Disability Practice 2 hrs; ELC Co-ordination 2 hrs; Childrens Play and Creative Studies 2 hrs; Childrens Rights Legislation and Regulation 2.67 hrs.

Salary, Qualifications and Conditions of Service in accordance with the relevant regulations of the Department of Education.

Application via e-recruit can be made on our website www.waterfordwexford.etb.ie. Closing date for receipt of completed forms is **Monday 22nd August 2022 @ 4.00 p.m.** Shortlisting may apply. Canvassing will disqualify. This ETB is an equal opportunities employer.

For persons entering a recruitment grade for the first time, starting pay will be at the minimum of the new reduced scale. The rate of remuneration may be adjusted from time to time in line with Government pay policy.

All appointments are subject to the sanction of the Minister for Education.

Other positions that may arise may be filled from panels created after interviews for these posts.

Please note: the above post(s), even though advertised, may not be filled or hours may be amended.

Signed:

Human Resource Manager, WWETB Ardavan Business Park Wexford.

www.waterfordwexford.etb.ie

e-mail: vacancies@wwetb.ie

[Advertised on facebook](#)

VENTURE CLOTHING DUNGARVAN



Venture Clothing

2d

...

WE ARE HIRING

We now have an opening for a fulltime sales assistant as some of our girls are heading back to college after the summer season.

If you are interested send your CV with cover letter to ventureck@yahoo.co.uk

IMPORTANT

* Must be available to work weekdays and weekends.

*Must be flexible.

VENTURE CLOTHING

Venture Clothing

Venture Clothing is Dungarvan's leading store for men and women. With great ...

Call now

[Advertised on facebook](#)

MURRAYS CAREPLUS PHARMACY DUNGARVAN



Murrays CarePlus Pharmacy

21h · 🌐

...

WE ARE HIRING !!!

- Pharmacist = 4 days
- Pharmacy Technician = Full time
- Experienced OTC Assistant = Full time
- Pharmacy Administration Role = Full time

Experience working in a pharmacy is required.

If you would like to join our friendly energetic team please send your CV to info@murrayspharmacy.ie

Or drop to Murray's CarePlus Pharmacy, 41 Grattan Square, Dungarvan, Co. Waterford.



[Advertised on facebook](#)

SALES ASSISTANT – DUNNES STORES DUNGARVAN

Job Alert. Waterford Jobs - JobAlert.ie
2d · 🌐

...

Dunnes Stores are now hiring a Sales Assistant in Dungarvan, Waterford.

Apply here: <https://www.jobalert.ie/.../sales-assistant-dunnes-stores...>

To advertise your job on our Facebook page & website click here:
[https://www.jobalert.ie/employers ...](https://www.jobalert.ie/employers...) See more



Sales Assistant
Flexible Hours

Dungarvan, Waterford

APPLY NOW

DUNNES
STORES

i

JOBALERT.IE

Sales Assistant | Dunnes Stores | Dungarvan, Waterford - 12th August | JobAlert.ie

Sales Assistant - Job Description Dunnes Stores is Ireland's leading retailer positioned at the cu...

[Advertised on facebook](#)

Dungarvan McDonald's

McDonald's restaurant Dungarvan is recruiting over 18 people who:

- *aiming to work 20-40h per week* any day on flexible basis;**
- *love fast paced environment and teamwork;*
- *enjoy learning and developing different skills, have growth mindset;*
- *willing to grow their career;*
- *like to be part of strong people culture;*
- *always aims to deliver best Quality, Service and Cleanliness to customers;*

Starting Rate : €10.80 Per Hour + premium pay paid for Sundays/Bank Holidays/Night hours

Flexibility : We know that good work/life balance is vital, so all employees are able to make informal flexible working request via our online platform.

Some perks : Free Meals during your scheduled shift, Employee discounts, Free uniform, Bike to Work scheme, internal recognition programs and competitions.

Holidays : 4 Weeks per year, paid based on holiday accrual

Opportunities : At McDonald's we believe in opportunity for everyone. If you want to learn, develop and further progress your career, we'll give you a chance after you pass your probational period and will demonstrate required mindset/skills.

We want every McDonald's customer to have a brilliant experience, every time they visit. That means hot food in a clean and friendly restaurant. As a Crew Member, you'll make it happen, whether you're preparing food, serving on the till or helping out in the dining areas. We'll train you in our high standards of customer service, food preparation, and cleanliness and hygiene. But the rest is up to you.

Things move fast at McDonald's, whether we're serving our customers or helping our people build their futures. In our workplace, we promote flexibility, opportunity, equality and development. McDonald's employees come from all walks of life, but share a common approach: positivity. We know that happy employees help to make happy customers, so we want you to enjoy your work.

Job Types: Full-time, Part-time, Permanent

Part-time hours: 20-40 per week

Salary: €10.80 per hour

Benefits:

- Company events
- Employee discount
- Flexitime
- Food allowance
- On-site parking

Schedule:

- 10 hour shift
- 8 hour shift
- Day shift
- Monday to Friday
- Night shift
- Weekend availability

Application question(s):

- List all days you will be available for work (Monday to Sunday)
- Are you Over18? Please give Yes/No answer.

Shift availability:

- Day shift (required)
- Night shift (required)

Application deadline:

19/08/2022

Reference ID:

Dungarvan O18 20-40 flexible

Expected start date:

25/08/2022

[Advertised on www.indeed.com](http://www.indeed.com)

Sales Assistant- Homesavers- Dungarvan

We are currently recruiting for Sales Assistant to join the team in our Dungarvan Store! You will ensure the delivery of outstanding levels of customer service to all our valued customers while ensuring that our high levels of store standards are maintained.

Role responsibilities:

- Provide information on our products to customers and the availability of stock and any special promotions
- Operate tills and handle financial transactions – Cash handling
- Merchandise and replenish stock as directed
- Ensure all goods / promotions / special offers are priced correctly
- Assist with deliveries and stock handling
- Undertake cleaning duties as required
- Use own initiative, where possible, to solve problems encountered when carrying out duties of the role.
- Identify in advance shortfalls that will affect the ability to meet daily operational targets.
- Continually develop an understanding of the Company's culture, values, policies, procedures, products and reflect this in everyday performance
- Adapt to changes implemented by Management, e.g. new procedures, policies, new operating techniques, etc.
- Embrace and apply operational business changes at all occasions.

The ideal candidate will:

- Be highly motivated
- Possess excellent communication skills
- Have exceptional levels of customer service
- Be flexible to work weekends and evenings
- Experience in a similar role would be beneficial

Job Type: Part-time

[Advertised on www.indeed.com](http://www.indeed.com)

Key Holder/Sales Assistant

Born Clothing – Dungarvan

We are looking for highly motivated and experienced retail associates who love fashion. We are hiring for part time flexible weekdays and weekends. Please see below for more details -

RESPONSIBILITIES

- Ensuring high levels of customer satisfaction by being knowledgeable on all products offered, and teaming up with co-workers to provide excellent sales service
- Delivering sales, outstanding customer experience, and operational expectations
- Maintaining personal and productivity goals
- Connects with every customer by asking open-ended questions to assess needs
- Ability to learn and share expertise of products and trends to fit customer's needs
- Maintains an awareness of all product knowledge, and current or upcoming product / trends
- Contributes to a positive and inclusive work environment

QUALIFICATIONS

- Experience in a retail environment preferred
- Confident and comfortable engaging customers to deliver an elevated experience
- Motivated to achieve great results because of one's enthusiasm from interacting with customers and athletic products
- Initiates completion of tasks or activities without necessary supervision
- Flexible availability – including evenings, weekends, and holidays

If you feel you are a good candidate for this role and are fully flexible Monday-Sunday, please apply here on Indeed with your CV. Please note we are looking to hire immediately for these roles and the ability to start ASAP.

Job Type Part-time

Salary: €10.50-€12.00 per hour

Schedule: 8 hour shift

Experience: Retail: 1 year (required)

[Advertised on www.indeed.com](https://www.indeed.com)

Sales Advisor - New Look - Dungarvan

SALES ADVISOR-ROI

Level	L8 - Retail Staff
Closing Date:	12/09/2022
Permanent / Fixed Term	Permanent
Store Location	Dungarvan
Contract variations available	12 hours

About Us

At New Look we all stand by our brand values; keep it simple, be brave, think customer, act with pace and take responsibility- That's the New Look way!

In 1969 New Look contributed to fast fashion and things are about to get even faster.

We're a team united with a clear purpose – to be the most loved and trusted high street retailer and bring some much needed fun back to the high street.

Every person makes New Look the incredible place it is to work, and together, we're unstoppable. Within our buzzing environment all our talented people work hard but we ensure some fun is thrown in too!

Fashion is personal and we want everyone to celebrate self-expression, helping our customers to look good, feel great and express themselves with fashion.

At New Look we spend our days working to improve the way we do business , our only rule is that there are no rules and we want people who can make a difference, think big, think brave and aren't afraid to make mistakes.

Does that sound like you?

About the Role:

As a Sales Advisor with New Look, you will work with your Management team to implement the ultimate shopping experience for our customers, ensuring they are given the highest level of service and they want to return back to us. You will inspire our customers look good and can express themselves with the latest fashion wherever and whenever they want. You will achieve by being an ambassador for brand on the shop floor putting our customers at the heart of everything you do.

About you

Every single person makes New Look the incredible place it is, and together we're unstoppable. You are someone who expresses your style your way with an eye for the latest trends who champions our customers to express their own unique style.

You will be passionate about service and your own development, seeking out innovative ways to improve your own performance with tailor made development plans from our Online Academy training and support from your Store Manager.

Why New Look?

At New Look we take pride in career progression, offering internal promotions to candidates who are ready to step up the career ladder. We also offer a huge staff discount of 40%, holiday days and access to our New Look Rewards which include some amazing discounts across a number of different businesses.

Come join us and see it for yourself. You have to experience it to truly believe it.

Just one more thing:

We know that job descriptions do not always let your unique work history show- if you do not meet all of our requirements but you still think you'd be a great fit for this role... apply anyway!

[Advertised on www.indeed.com](http://www.indeed.com)

Part time jewellery sales assistant, 4 days a week, immediate start- job post

[Dalton jewellers](#)

Dungarvan, County Waterford

Part-time

[Apply now](#)

Job details

Job type Part-time

Full Job Description

Sales assistant,

Selling jewellery and dealing with customers on a one-to-one basis.

Basic watch and jewellery repairs.

Work remotely No

Job Type: Part-time

Schedule: 8 hour shift

Experience: Sales: 1 year (preferred)

[Advertised on www.indeed.com](http://www.indeed.com)

Retail Sales Assistant- job post

[Paul Byron Shoes](#)

Dungarvan, County Waterford

€10.50 an hour - Full-time

[Apply now](#)

Full Job Description

Paul Byron Shoes are now seeking to hire experienced Retail Sales Assistants for a Full Time position in Dungarvan, Co. Waterford.

Responsibilities of this role:

- Sell to and assist potential customers.
- Dealing with customer queries including telephone queries in a professional and efficient manner.
- Ensure excellent store standards are delivered at all times by merchandising, pricing and displaying stock to maximise sales.
- Display excellent product knowledge and ongoing interest.
- Work with Store Manager on all duties within the store.
- Manage point of sale processes including cash and card transactions.

Skills and Experience:

- Retail/ Customer Experience is essential.
- Excellent interpersonal and communication skills.
- A keen customer focus.
- The successful candidate should demonstrate a willingness to learn and keep up to date with products.
- Ability to work on own initiative.
- Flexible to work any five days in a seven day period.

Job Type: Full-time

Salary: From €10.50 per hour

Benefits: Employee discount

Schedule: 8 hour shift

Application question(s): If successful in obtaining the position, when are you available to start?

Experience: Sales: 1 year (preferred)

[Advertised on www.indeed.com](#)

Retail Operative- job post

[Butcher Shop Dungarvan](#)

Dungarvan, County Waterford

€10.50 - €14.50 an hour - Full-time, Part-time, Permanent

[Apply now](#)

Job details

Salary

€10.50 - €14.50 an hour

Job type Full-time Part-time Permanent

Full Job Description

Full and part time retail operatives required for busy butcher shop in Dungarvan. Immediate start.

Top rates paid to the right candidate.

Job Types: Full-time, Part-time, Permanent

Salary: €10.50-€14.50 per hour

Schedule: 8 hour shift

[Advertised on www.indeed.com](http://www.indeed.com)

SCALLYWAGS LISMORE COMMUNITY CHILDCARE LTD



Scallywags Lismore Community Childcare Centre Ltd.

4d · 🌐

...

We have an opportunity for you to come and join our team!! Apply today for a rewarding role with our team here at Scallywags 😊



www.scallywagslismore.com

We wish to recruit enthusiastic, dynamic team players interested in their own personal and professional development as well as the development of the children attending Scallywags

Positions Available:

Early Years Practitioner Fixed Term appointment of 6 months (with possibility of extension)

up to 30 hours per week

Relief Panel up to 25 hours per week covering holidays and sick leave.

Requirements:

Early Years Practitioner position: Level 5 minimum Childcare Qualification with at least

1 years experience working within a play based childcare setting

Current Tusla Children's First Certificate and First Aid

Please forward a letter of application and CV to:

Kristin Murray

Manager

Scallywags

Lismore Community Childcare Centre Ltd

Bohar Mochuda

Lismore

Co. Waterford

Email: scallywags.lismore@gmail.com

[Advertised on facebook](#)

MUNSTER TIMBER STRUCTURES

We are currently recruiting for carpenters, potential apprentices and general operatives to work on building sites in and around Waterford city.

Safe Pass essential.

Email info@munstertimber.ie Phone 051 879169



Deise Jobs - Waterford

1h

...



Munster Timber Structure ▶ Deise Jobs - Waterford

5d

We are currently recruiting for carpenters, potential apprentices and general operatives to work on building sites in and around Waterford city. Safe Pass essential.

Email info@munstertimber.ie

Phone 051 879169

[Advertised on facebook](#)



**Full details of these vacancies can
be found on www.jobsireland.ie**

**An Roinn Coimirce Sóisialaí
Department of Social Protection**

CE Vacancies

[Community Employment Schemes]

CES – 2239226 – Groundsperson - Dungarvan

Grass cutting, horticultural and general maintenance at Carriglea Community Project.

CES – 2239225 – Administrative Worker / Tour Guide - Dungarvan

Providing secretarial support and guide for community group.

Location: Carriglea Community Project

CES – 2239225 – Administrator - Dungarvan

Providing secretarial support and admin services in Dungarvan Enterprise Centre.

CES – 2239223 – Caretaker / Cleaner - Dungarvan

Cleaning, light maintenance, room set up etc.

CES – 2239222 – Caretaker - Dungarvan

5 morning's - duties include light maintenance, caretaking, painting, and cleaning.

Job Location: Causeway Tennis Club

CES – 2239221 – Groundsperson - Dungarvan

Grass cutting, horticultural work, general maintenance work at Dungarvan Golf Club.

CES – 2239220 – Groundsperson - Dungarvan

Grass cutting, horticultural work, general maintenance work at Cunnigar Pitch & Putt Club.

CES – 2236876 – Cleaner - Dungarvan

Duties to include cleaning of the Church, offices and toilets. Arranging symbols for Church events. Look after and water flowers. Check supplies and notices are in date. Candidate will receive on the job training to help get used to job.

CES – 2235194 – Caretaker - Cappoquin

Duties to include working as a Caretaker in Cappoquin Community Centre, may have to work evenings or weekends.

CES – 2235083 – Environmental Worker - Ballymacarbry

Working with Ballymacarbry Tidy Towns , Duties will include the maintenance and upkeep of the communal areas of the village , this is a developmental opportunity , all training will be provided.

CES – 2234652 – Maintenance / Caretaker - Lismore Cathedral

Duties will include maintenance and upkeep of walkways, grass cutting, use of strimmer to keep pathway along routes visible. Make sure signage is easily visible with maintenance and repair of styles and gates on the route. Litter collection and waste management, pest control, planting. General caretaker duties, maintenance of buildings, carpentry work, painting, internal and external cleaning along with handling of stock and equipment. Various other duties from time to time as required.

CES – 2234651 – Maintenance / Groundsperson - Lismore GAA & Community Centre

Duties will include general Grounds person and caretaker duties, Pitch, Field & grounds maintenance, use of tractor, mowers, strimmers and associated equipment etc. Maintenance of buildings, painting, cleaning internal and external, open and close buildings set up of equipment. General maintenance duties, carpentry work, painting, internal and external cleaning

CES – 2234649 – Crèche Worker - Lismore

Crèche Worker - Scallywags Childcare – Lismore

Duties to include assisting the Crèche /Playschool Leader with all general associated childcare tasks and duties, supervision of children, plan activities, teach through play etc. Various other duties from time to time as required. Participant will be expected to undertake childcare training and development including QQI Level 5 childcare training where relevant.

CES – 2227957 – Cleaner - Stradbally

Indoor and outdoor cleaning of all areas in the club house and dressing rooms and general cleaning duties. Location Stradbally GAA Centre.

CES – 2227953 – Environmental Worker - Kilrossanty

Duties to include grass cutting, strimming and caretaking/maintenance duties in and around Kilrossanty GAA.

CLIENTS OF THE LES - LOCAL EMPLOYMENT SERVICE IN DUNGARVAN / LISMORE

CAN PHONE

NIAMH KUHNE OR PAULA HENNESSY - LOCAL EMPLOYMENT SERVICE - TEL: 058 44077

Work Placement Experience Programme



Intreg Work Placement Experience Programme

- Gain valuable work experience
- Receive accredited training
- Connect with employers
- Increased weekly payment to €306

Brought to you by the Department of Social Protection



WPEP
Work Placement Experience Programme

Unemployed?
Looking to gain new skills and work experience?
Could the Work Placement Experience Programme be for you?

You can:

- get quality work experience
- learn new skills and participate in formal training
- get an increase on your weekly payment



Get work experience
Get new skills
Get training & support

A placement:

- is 30 hours per week for six months
- is designed to give you new skills; includes mentoring and QQI accredited training options
- will provide you with better employment options in future
- can help you change career

View available work placements at
www.jobsireland.ie

For more information
Visit: www.gov.ie/wpop
Email: wpep@welfare.ie
Telephone: 0818 111 112

Brought to you by the Department of Social Protection

Work Placement Experience Programme

From [Department of Social Protection](#)

Published on 12 July 2021

Last updated on 15 October 2021

- [1. What the Work Placement Experience Programme is](#)
- [2. How to qualify](#)
- [3. Rate of payment](#)
- [4. Apply](#)
- [5. Operational Guidelines](#)

For measures announced in Budget 2022, [please click here](#).

What the Work Placement Experience Programme is

The Work Placement Experience Programme (WPEP) is a 6-month, 30 hour per week voluntary work experience programme. The programme is for jobseekers that are currently getting a qualifying social welfare payment and who have been unemployed for six months (156 days) or more.

The weekly rate of payment is €306.

See the qualifying list in the [next section](#).

If you would like to re-train and gain experience in another type of employment, this programme can help you build new skills and gain work experience. You cannot take a placement where you already have built up experience in the role.

You can work part-time while you are on the programme, provided the part-time work does not impact your placement. The part-time work cannot be with the WPEP host.

COVID-19 Pandemic Unemployment Payment

If you are getting the COVID-19 Pandemic Unemployment Payment (PUP) and you would like training and work experience in a new work role, the WPEP may be an option for you.

Time spent on PUP may be counted as part of the 6 month (156 day) qualifying criteria for WPEP, but you must transfer to one of the [qualifying payments](#) before you can take up a WPEP placement.

How to qualify

To qualify for the Work Placement Experience Programme, you must be a jobseeker:

- aged between 18 and 65 years, and
- on a qualifying scheme for at least 6 months (156 days), and
- currently getting certain social welfare payments

The qualifying payments are:

- [Jobseeker's Allowance](#)
- [Jobseeker's Benefit](#)
- [Jobseeker's Transitional Payment](#)
- [One-Parent Family Payment](#)
- [Disability Allowance](#)
- [Blind Pension](#)
- [Farm Assist](#)
- [Jobseeker's Benefit for the Self-Employed](#)

Time spent on the schemes below may be counted as part of the 6 month (156 day) qualifying criteria. You must transfer to a Jobseekers' payment before you can take up the placement.

- [COVID-19 Pandemic Unemployment Payment](#)
- [Community Employment Programme](#)
- [Back to Education Allowance](#)
- [Youthreach](#)
- [Springboard](#)
- [Solas Training Programmes](#)
- [TÚS - Community Work Placement Initiative](#)
- [Rural Social Scheme](#)

Jobseekers who are currently getting the COVID-19 Pandemic Unemployment Payment must qualify and switch to a Jobseekers' payment before they start the programme.

The [WPEP Guidelines](#) provide information on participant eligibility or you can check with your [local Intreo Centre](#) Case Officer to see if you are entitled to take part in any scheme or placement.

Apprenticeships

You may have heard about Apprenticeships but not understood what they are or what they involve.

Apprenticeships are a fantastic opportunity to train in a specific skilled area while getting paid and earning a qualification. In Ireland, there is a lack of skilled workers in certain industries. This is especially true with some losing their jobs during the pandemic. An apprenticeship is a great way to change careers and immediately start earning again.

But what exactly is an apprenticeship and how does it work? In this blog, we'll answer these questions and more.

What is an apprenticeship?

An apprenticeship is a training and education programme that combines learning in a college/university or training centre with work-based learning in a company.

At least 50% of apprenticeship learning is completed in the workplace.

When you think of an apprenticeship you probably think of things like carpentry, plumbing, mechanics, and electrical apprenticeships. These 'traditional' apprenticeships are called craft apprenticeships.

A craft apprenticeship generally lasts for 4 years, during that time you will spend 3 different periods in off-the-job training. Craft apprenticeships include carpentry, plumbing, motor mechanics and electrical apprenticeships. Craft apprentices are awarded a QQI Level 6 certificate.

Since 2016, new apprenticeships introduced can be for between 2 and 4 years and lead to an award between Levels 5 and 10 on the [National Framework of Qualifications](#).

There are a number of models of on-the-job and off-the-job training, as well as different models of delivery and different target groups. Industry-led groups which work with education and training providers and other partners, oversee the development and roll-out of new apprenticeships. New apprenticeships are available in Information Communications Technology (ICT), finance, insurance and hospitality including software development, accounting technician, insurance practitioner and commis chef.

All successful apprentices receive a QQI qualification which is recognised internationally.

What types of apprenticeships are available?

There are currently 64 different types of apprenticeship available and over 8,400 employers approved to train apprentices. Check out [the Apprenticeship website](#) to see exactly what's available.

More programmes are being developed all the time. On Monday 23, May, the first-ever [apprenticeship for bar managers](#) was launched.

Will I earn money?

Yes, you will! Apprentices 'earn while they learn' – they have a formal employment contract and are paid a salary for the duration of their apprenticeship training.

If you are doing a craft apprenticeship, then you will be paid the [recommended apprenticeship wage](#) by your employer while you are on the job, when you are in college the Education and Training Board will pay you a weekly allowance that is the same as your on-the-job wage.

If you are doing a new apprenticeship (those developed since 2016) you will be paid by your employer for the duration of the apprenticeship. The rate of pay is agreed between you and your employer. How much you will earn will depend on the apprenticeship programme you do.

Important to note: Your annual leave entitlements continue to add up when you are off the job. But you must take them when you are on the job and with the agreement of your employer.

If you are an apprentice with children, you should investigate whether you qualify for the [Working Family Payment](#) (WFP). It is a weekly tax-free payment for employees who have children. Apprentices qualify for the payment once they meet the other criteria.

How do I qualify for an apprenticeship?

Generally speaking, you need to be at least 16 years old and have a minimum Grade D in 5 subjects in the Junior Cert or equivalent. However, some apprenticeships and employers might require higher qualifications and other requirements. It all depends on the apprenticeship.

But don't worry if you don't meet the criteria – there are alternative routes to accessing an apprenticeship! If you don't have the required qualifications, you can complete an approved preparatory training course followed by an interview or if you are over 18 and have a minimum of 3 years of relevant work experience you can do an assessment interview.

Some apprenticeships will require you to pass a colour vision test.

What does it cost?

Apprentices do not pay tuition fees. However, they do have to pay the [Student Contribution Charge](#) (also known as the registration fee). They do not pay the full amount but pay a part of the fee based on how long they will be in the college.

For example, the student contribution charge is capped at €3,000 per academic year for full time students. For an apprentice who might spend a 10/11 week semester at college they would only pay €1,000.

Apprenticeships do not qualify for the SUSI grant.

Who can be an apprentice?

Anyone can be an apprentice, as long as you meet the criteria! Apprentices are learners of all ages who come from all types of educational and employment backgrounds. – there are currently over 24,000 apprentices completing training in Ireland and they include school leavers, older learners, people who wanted a career change, women, people with disabilities and people from diverse backgrounds.

How do I apply for an apprenticeship?

To apply for an apprenticeship, you should contact the apprenticeship section of your [local Education and Training Board \(ETB\)](#).

Where do I find out more?

For more information on apprenticeships visit www.apprenticeship.ie

The website is packed with information about becoming an apprentice. You will find a full list of all available apprenticeships as well as the contact details for your local ETB. The website also lists employers that are currently looking to take on apprenticeships. You can also call the dedicated helpline for free on **1800 794 487**. Open 12pm-6pm Monday-Friday.

We hope you've learned something more about apprenticeships and the great opportunities they can offer to all kinds of people whether they're just finishing school or are looking for a change of pace.

LIST OF POPULAR JOB SEARCH SITES



<https://ie.jooble.org/jobs/Waterford>

<https://www.recruitireland.com/search/?County=Waterford>

<https://waterfordjobs.ie/>



<https://www.rezoomo.com/>

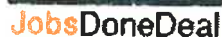
<https://www.glassdoor.ie/index.htm>



<https://www.jobalert.ie/jobs-by-county>



<https://www.irishjobs.ie/>



<https://www.jobsdodeal.ie/>



<https://www.adverts.ie/jobs>



<https://ie.indeed.com/jobs-in-Waterford>



<https://www.jobsireland.ie/#/home>



<https://www.clsrecruitment.ie/>



<http://www.sherlockrecruitment.com/jobs/construction/>



<https://www.gumtree.ie/s-jobs/waterford/v1c813300023p1>



<http://wardpersonnel.com/>



<https://www.frsrecruitment.com/>



<https://www.jobs.ie/>



<https://www.monster.ie/>



<https://ie.jobtome.com/jobs?what=&where=waterford>



<http://www.wlrfm.com/jobs/>



<http://www.beat102103.com/jobs/>



<https://www.cpl.ie/Home>

THE IRISH NATIONAL ORGANISATION OF THE UNEMPLOYED



The Irish National Organisation of the Unemployed

2h

If you need help navigating the social welfare system call our Welfare Assistance Team at (01) 8560088. They will be able to talk you through the ins and outs of the system. You can also leave a message on our website and have someone get back to you at a later stage. <https://www.inou.ie/about/contact-us/>

INOUE



Welfare Rights & Back to Work
Supports Information Helpline

(01) 8560088

Free - Confidential - Impartial Information Services

[Advertised on facebook](#)

Benefit of Work Estimator

Check now

You do not need a [MyGovID](#) to use this service.

What is the Benefit of Work Estimator ?

The benefit of work estimator for jobseeker and one parent family payments shows how starting work or increasing your hours could affect your payment. The estimate will include income from your employment and any social welfare payments you may still be entitled to.

Who can use the Estimator?

This tool is anonymous and the information you provide cannot be used to identify you by the Department of Social Protection.

What Information does it need?

You will need to provide information on:

**Social Welfare Scheme.**

You will need to tell the estimator what scheme you are currently being paid on.

**Family and Children.**

You will need to select your relationship status and if you have dependent children.

**Job Details.**

You will need to provide information on your current job, if applicable, and you will need to know how many days, hours and the rate of pay for the new job.

Benefit of work estimator

Check now

You do not need a [MyGovID](#) to use this service.



FURTHER EDUCATION & TRAINING COURSE HUB

Fetchcourses.ie was developed by SOLAS, the Further Education & Training Authority, in partnership with Education and Training Boards Ireland (ETBI) and other Further Education and Training providers.

**ANYONE WHO HAS LOST THEIR JOB DUE TO
COVID-19 CAN NOW ACCESS
FREE TRAINING ON-LINE.**

TO VIEW ALL COURSES AVAILABLE PLEASE LOG ONTO:

WWW.FETCHCOURSES.IE

SELECT LOCATION AS ONLINE

Examples of courses to choose from include :

ECDL, Photoshop, Excel, Word, Advanced Word, Advanced Excel,
Graphic Design & Illustration using Adobe, Powerpoint, CompTIA A+,
Python Programming and many more.

ON-LINE AND TELEPHONE TUTOR SUPPORT AVAILABLE FOR DURATION OF TRAINING

FOR MORE INFORMATION PLEASE CONTACT:

e-COLLEGE LEARNING - Contact - Fiona Lester - 1800 855 831

CLIENTS OF THE DUNGARVAN/LISMORE LOCAL EMPLOYMENT SERVICE

PLEASE CONTACT YOUR CASE OFFICER - NIAMH KUHNE - 058 44077

SPRINGBOARD



Waterford Wexford Adult Educational Guidance Service

June 17 at 3:00 PM - 4:00 PM

...

WHAT is Springboard-?

AM I eligible?

WHAT courses are available?

HOW much will I have to pay?

Springboard+ provides free higher education courses for people who are unemployed (or were self-employed) and those looking to return to the workforce. You can also apply for a Springboard+ course if you are working, but you must pay a 10% contribution towards the course fee.

Most courses will be part-time for one year. However, some courses will be for up to 2 years. Visit www.springboardcourses.ie to see all courses currently accepting applications.



SPRINGBOARD+

www.springboardcourses.ie

**FREE
SUBSIDISED
COURSES
AVAILABLE**

springboardcourses.ie



SPRINGBOARD+ 2022/23 TRAINING COURSES

Springboard+ offers free / 90%-funded courses in areas of high skills need including Science, Hospitality, Engineering, Computing and Business. Courses are typically up to one year and are open to employed, unemployed and returners.

SETU Waterford has been funded for the following courses this year 🌟

Springboard+ 2022/23

South East Technological University
www.setu.ie



BUSINESS MANAGEMENT MARKETING	LEVEL	CREDITS	LOCATION
Master of Business Internationalisation	9	90	Waterford
Postgraduate Diploma in Digital Marketing Practice	9	60	Waterford
Master of Science in Supply Chain Management	9	90	Carlow/Wicklow/Wexford
Certificate in Workforce Management	9	30	Carlow/Wicklow/Wexford
Higher Diploma in Digital Marketing with Analytics	8	60	Carlow
Higher Diploma in Business in Supply Chain Management	8	60	Carlow/Wicklow/Wexford
Higher Diploma in Arts in Digital Media Design	8	60	Carlow/Wicklow/Wexford
Certificate in Regulated Investment Funds	8	20	Waterford
Diploma in Lean Fundamentals	7	60	Waterford

COMPUTING	LEVEL	CREDITS	LOCATION
MSc in Information Technology Management	9	90	Carlow
MSc in Cybersecurity, Privacy and Trust	9	90	Carlow
Higher Diploma in Computer Science	8	90	Waterford
Higher Diploma in Business Systems Analysis (2-year online)	8	60	Waterford
Higher Diploma in Science Computing (Systems and Information Technologies Services) [2-years online]	8	90	Carlow

SCIENCE	LEVEL	CREDITS	LOCATION
MSc in Medical Device Regulatory Affairs	9	90	Carlow
Master of Science in Pharmaceutical Regulatory Affairs	9	90	Carlow
Certificate in International Regulatory Affairs (Postgraduate)	9	10	Waterford

ENGINEERING MANUFACTURING CONSTRUCTION	LEVEL	CREDITS	LOCATION
Master of Science in Environmental, Health and Safety Management	9	90	Carlow/Wicklow/Wexford
Certificate in BIM and Construction Project Management	9	30	Carlow
Bachelor of Science (Honours) in Construction Management	8	60	Waterford
Bachelor of Science in Construction Site Management	7	60	Waterford
Bachelor of Science in Energy Management (Buildings)	7	60	Carlow
Certificate in Automation Engineering	7	15	Waterford
Certificate in Energy Sustainability	7	10	Carlow

TOURISM AND HOSPITALITY	LEVEL	CREDITS	LOCATION
Diploma in Restaurant Management	7	60	Waterford
Certificate in Culinary Skills	8	60	Waterford
Certificate in Plant Based Cooking & Sustainable Practices	6	35	Waterford

CONTACT DETAILS

Carlow | Wexford | Wicklow
Lifelong Learning Office
springboard.cw@setu.ie
059 9176280

Eoin O'Brien
eoin.obrien@setu.ie
059 917 5278

Waterford
Lifelong Learning Office
springboard.wd@setu.ie
051 302040

Joan Mangan
joan.mangan@setu.ie
051 302849

Lorraine Quirk
lorraine.quirk@setu.ie
051 834137

Springboard+ is co-funded by
the Government of Ireland
and the European Union.



Rialtas na hÉireann
Government of Ireland

HEA
HIGHER EDUCATION AUTHORITY
HÍOILTEACHA AN OIRIATHAIS

Regional Skills
SOUTH EAST
South East Technological University

Advertised on facebook

CONSTRUCTION GROUND WORK SKILLS TRAINING COURSE THROUGH WATERFORD WEXFORD EDUCATION & TRAINING BOARD

Would you like to pursue a career as a skilled construction operative? Are you considering an apprenticeship in one of the construction trades?
Construction Ground Work Skills course will be a great starting point. On successful completion of this course, learners will achieve a QQI Level 4 Special Purpose Award in Construction Ground Work Skills.

Location: Kilcohan Training Centre Waterford
☎ 051-301500 051-301555

Start Date: 19/09/2022
✉ recruit@wwetb.ie

Duration: 10 weeks



WWETB Waterford and Wexford Education and Training Board

...

Would you like to pursue a career as a skilled construction operative? Are you considering an apprenticeship in one of the construction trades?

Construction Ground Work Skills course will be a great starting point. On successful completion of this course, learners will achieve a QQI Level 4 Special Purpose Award in Construction Ground Work Skills.

Location: Kilcohan Training Centre Waterford

Start Date: 19/09/2022

Duration: 10 weeks

☎ 051-301500 051-301555

✉ recruit@wwetb.ie

For further information or to apply please visit:

<https://www.fetchcourses.ie/coursefinder...>



wwetb

Waterford and Wexford Education and Training Board
Quality Standard Approved
Training and Development
Award Winning Training Board

Construction Ground Work Skills starting in September 2022

Modules Include:

- Concreting
- Safety And Manual Handling
- Kerb Flag And Pavior Laying
- Safepass
- Career Planning

Contact : recruit@wwetb.ie

Phone: 051-301500 / 301555

www.fetchcourses.ie

code: 358260

www.wwetb.ie

Course Location:
Kilcohan Training Centre (WWETB)
Waterford

Advertised on facebook



UPCOMING BTEI TRAINING COURSES IN PORTLAW THROUGH WATERFORD WEXFORD EDUCATION & TRAINING BOARD

Upcoming BTEI courses in September in Portlaw.. for more information contact 051 393794/086 0460986 or email maryupton@wwetb.ie also you can apply online through www.fetchcourses.ie



Waterford Wexford Adult Educational Guidance Service

Upcoming BTEI courses in September in Portlaw.. for more information contact 051 393794/086 0460986 or email maryupton@wwetb.ie also you can apply online through www.fetchcourses.ie

PORTLAW - Monday Start Date 5th September

Time	Course	Code	Weeks
9:15am - 2:00pm	Group 1 Care Support and Palliative Care QQI 5 Healthcare Support Award YR 2	HC-352768	32

PORTLAW - Tuesday Start Date 6th September

Time	Course	Code	Weeks
9:15am - 11:15am	Book Keeping QQI 4	OS-360039	32
11:30am - 1:30pm	Word Processing QQI 3	OS-360042	20

PORTLAW - Wednesday Start Date 7th September

Time	Course	Code	Weeks
9:15am - 2:00pm	Group 1 Care Support and Palliative Care QQI 5 Healthcare Support Award YR 2	HC-352770	32

Who can take part in these courses?

BTEI is available and fully funded to those where any of the following are relevant:

- No leaving certificate
- Current Medical Card
- Social Welfare Payment or signing credits
- CE Scheme Participant
- A dependant of a Social Welfare Recipient
- Those employed that need skills for their work under Skills to Advance

Talk to the coordinator regarding your eligibility for courses.

Advertised on facebook

DUNGARVAN COLLEGE OF FURTHER EDUCATION TRAINING COURSES

Are YOU considering a new career path??? Huge range of 9-month courses available at Dungarvan College for Sept 2022.

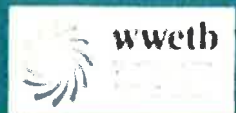
All courses are suitable for adults hoping to upskill or change their career options. It also can lead directly into employment and progression onto Higher Education..



Dungarvan College - Further Education

June 1st at 6:06 PM

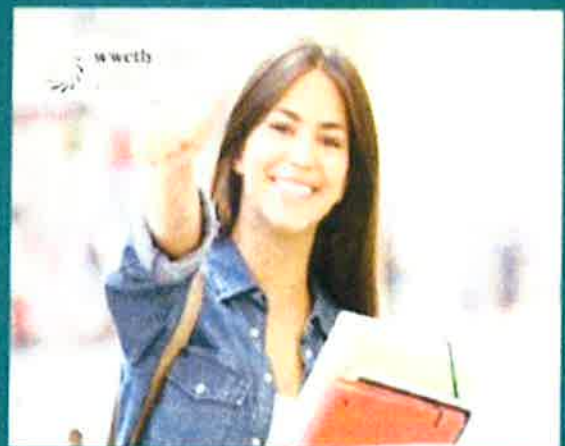
...



DUNGARVAN COLLEGE OF FURTHER EDUCATION

Full time course QQI L5 & 6

- Sports Science, Sports Exercise & Leisure Management
- Business & IT
- Accounting Technician
- Engineering
- Lab Assistant
- CAD
- Pre Apprenticeship
- Healthcare
- Pre Nursing
- Community Care
- SNA/Childcare
- Graphic Design
- Art Portfolio
- Beauty Therapy



[Advertised on facebook](#)

START YOUR OWN BUSINESS TRAINING COURSE THROUGH WATERFORD WEXFORD EDUCATION & TRAINING BOARD



Waterford Wexford Adult Educational Guidance Service

START YOUR OWN BUSINESS: ENTERPRISE STUDIES

Start Date: 01/09/2022

Location: Kilmacthomas Co. Waterford

This is a full time programme, where students spend a minimum of 12 hours per week in a classroom setting where they gain the knowledge and skills to start a business. They are also required to complete Work Practice/Mentoring. A full time commitment is required from the student through a combination of onsite class attendance and work practice in order to achieve their objective of starting their own business.

For more information click on link or to apply online

<https://www.fetchcourses.ie/course/finder...>

Start Your Own Business Course



wwetb



Contact: patriciadaly@wwetb.ie

051 294680

[Advertised on facebook](#)

BTEI TRAINING COURSES IN CAPPOQUIN THROUGH WATERFORD WEXFORD EDUCATION & TRAINING BOARD

BTEI Cappoquin Classes for September.. With lots to choose from..if you are considering upskilling, retraining or returning to Education these flexible part time modules are ideal.

For more information contact antoniasplini@wwetb.ie or to apply online go to www.fetchcourses.ie

Upcoming BTEI Courses in Cappoquin WWETB Further Education & Training Centre Twig Bog, Mill St Cappoquin, Co. Waterford.

Healthcare Modules - QQI Level 5

Care of the Older Person	Aug. - Dec	Wednesdays	11:30 - 1:30pm
Infection Prevention & Control	Aug. - Dec	Mondays	09:15-11:15am
Communications	Aug. - Dec	Mondays	11:30 - 1:30pm
Work Experience	Jan. - May	Mondays	09:15-11:15am
Safety & Health at Work	Jan. - May	Mondays	09:30-11:15am
Care Skills	Jan. - May	Wednesdays	11:30-1:30pm
Palliative Care	Jan. - May	Wednesdays	09:15-11:15am
Care Support	Aug. - Dec	Wednesdays	09:15-11:15am

Childcare/SNA Modules - QQI Level 5

Children with Additional Needs	Sept. - Feb.	Fridays	9:15-11:15am
Special Needs Assisting	Sept. - Feb.	Fridays	11:30 - 1:30pm

Culinary Skills Modules- QQI Level 4

Menu Planning	Jan. - May	Tuesdays	12:00-1:30pm
Culinary Techniques	Sept. - May	Tuesdays	9:15-11:45am
Catering Operations & Systems	Sept. - Dec.	Tuesday	12:00-1:30pm
Workplace Safety	Sept.-Feb.	Thursdays	09:15-11:15am
Personal Effectiveness	Oct.- May	Thursdays	09:15-11:15am

Employment Skills -QQI Level 4

Communications	Jan. - Dec.	Wednesdays	09:15 - 11:15am
Maths	Sept. - Feb.	Thursdays	11:30 - 1:30pm
Career Planning	Jan. - March	Wednesdays	09:15 - 11:15am
Personal Effectiveness	Oct - May	Thursday	09:15 - 11:15am
Customer Service	April - May	Wednesdays	09:15 - 1:30pm
Workplace Safety	Sept. - Feb.	Thursdays	09:15 -11:15am
Work Experience	Jan. - March	Wednesdays	11:30 - 1:30pm
Information Technology Skills	Sept.- Dec.	Wednesdays	1:30 - 1:30pm

Tourism with Business & IT Modules - QQI Level 5

Tourism Information & Administration	Aug. - May	Tuesdays	09:15- 11:15am
Customer Service	Aug- May	Thursdays	09:15 - 1 1:15am
Bookkeeping Manual & Computerised	Sept. - May	Thursdays	11:15 - 1:30pm
Heritage	Aug. - May	Tuesdays	11:30- 1:30pm

Management

Supervisory Management QQI Level 6	Oct- May	Fridays	09:15-1:30pm
------------------------------------	----------	---------	--------------

NOTE TIMES DATES SUBJECTS TO CHANGE

A Path to Learning for All

[Advertised on facebook](#)

TRAINING DELIVERY AND EVALUATION TRAINING COURSE THROUGH TIPPERARY EDUCATION & TRAINING BOARD



Tipperary Education and Training Board

Starts September

Clonmel

2 evenings p/wk for 10 weeks

Apply here: <https://bit.ly/3toLJI4>

Enquiries to Siobhán 051 640742

Email: eveningtraining@tipperaryetb.ie

#EveningTrainingCourse #Clonmel #Trainthetrainer



TRAINING DELIVERY AND EVALUATION COURSE



CLONMEL

SEPTEMBER
2 EVENINGS PER WEEK

Contact:
eveningtraining@tipperaryetb.ie
051 640742

Advertised on facebook

BTEI TRAINING COURSES IN DUNGARVAN THROUGH WATERFORD WEXFORD EDUCATION & TRAINING BOARD

BTEI evening classes for Dungarvan for September.

Childcare modules and Healthcare modules available..

Contact antoniasplini@wwetb.ie for more information or apply online through www.fetchcourses.ie



Back to Education Initiative



wwetb

Waterford & Wexford Education & Training Board
Supporting people to learn
to succeed in life

What is the Back to Education Initiative: The Back to Education Initiative (BTEI) provides part-time courses for young people over 16 yrs. and adults, aimed principally at those who have not completed Leaving Certificate or equivalent qualification. It gives individuals the opportunity to combine a return to learning with family, work, and other responsibilities. **FREE TUITION** is available for those with no leaving certificate or current medical card or in receipt of Social Welfare Benefit/Allowance

Upcoming BTEI Courses in Dungarvan (Evening classes- 6:30- 9:00pm)

Early Childhood Care and Education Modules

- Children with Additional Needs Module- Level 5- 360021- Monday 6:30-9pm
- Special Needs Assistant Module- Level 5 – 360018 Monday 6:30-9pm-
- Supervision in Early Childhood Care- Level 6- 360205- Wednesday 6:30-9pm
- Communications & Work Experience- Level 6- 360208- Monday 6:30-9pm



HEALTHCARE SUPPORT QQI Level 5 – Modules

- Care Skills- Y1- 360287- Wednesday- 6:30-9pm
- Care of the Older Person- Y1- 360288 Wednesday 6:30-9pm
- Safety & Health at Work- Y1- 359194- Thursday- 6:30-9pm
- Infection Prevention & Control- Y1- 360289- Thursday- 6:30-9pm
- Care Support- Y2- 36030- Thursday 6:30-9pm
- Palliative Care- Y2- 360305- Thursday 6:30-9pm
- Communications - Y2- 360306- Tuesday 6:30- 9pm
- Work Experience- Y2 354563- Tuesday 6:30- 9pm

The following timetables have the awards separated into components. If you want to work towards a major award, speak to the coordinator. Courses will run once sufficient applications are received. Changes may occur to the timetable before the September start date. Applicants will be informed where relevant.

A Path to Learning for All

Advertised on facebook

PAINTING & DRAWING TRAINING COURSE THROUGH WATERFORD WEXFORD EDUCATION & TRAINING BOARD

Interested in Painting & Drawing then this module is the one for you. 🎨

This is a part time QQI level 4 course
Thursday September 1st 9:15am - 1:45pm
Dungarvan Adult Education Centre Wolfe Tone Road.
Contact: maryupton@wwetb.ie or phone: 0860460986



wwetb



PART TIME DRAWING QQI 4 AND PAINTING QQI 4 CLASSES FOR DUNGARVAN

This new course is delivered as part of the Back to Education Initiative at Wolfetone Road Campus.

Eligibility Criteria applies and courses are fully funded if you meet any of the following

- No leaving certificate
- Current Medical Card
- Social Welfare Payment or signing credits
- A dependent of a Social Welfare Recipient
- CE Scheme Participant

Classes will be delivered On Thursday commencing on September 1st 2022 from 9.15am to 1.45pm and will run until May 2023.

Contact Mary Upton by email to maryupton@wwetb.ie or by phone to 086 0460986

Waterford & Wexford Education & Training Board

BTEI



Advertised on facebook

**VTOS TRAINING COURSES IN DUNGARVAN
THROUGH WATERFORD WEXFORD EDUCATION & TRAINING BOARD**



Waterford Wexford Adult Educational Guidance Service ...

19h · 🌐

Dungarvan VTOS is now taking enrollment for the course starting in September.

340197 - OFFICE SKILLS - LEVEL 4 GENERAL LEARNING

340281 - ART GENERAL LEARNING LEVEL 4 (NO FEES)

This is a full time course Monday - Friday...

VTOS Dungarvan



wweth

340197 - OFFICE SKILLS - LEVEL 4

340281 - ART GENERAL LEARNING LEVEL 4

Taking applications for September 2022



For more information contact alleanoconnor@wweth.ie
or to apply online go to www.fetchcourses.ie
telephone 058 45757

Advertised on facebook

**CUSTOMER SERVICE TRAINING COURSE - DUNGARVAN
THROUGH WATERFORD WEXFORD EDUCATION & TRAINING BOARD**



Waterford Wexford Adult Educational Guidance Service ...

4h

SKILLS TO COMPETE CUSTOMER SERVICE QQI L5 (EVENING)

Start Date: 20/09/2022

End Date: 12/11/2022

Duration: 8 Weeks

Location: Dungarvan

(times and dates subject to changes)

On completion of the training programme learners will be able to provide effective customer service within a range of environments.

Contact:

051 301564/ 051 301593

email: catherineprendergast@wwetb.ie

course code: 337297

QQI LEVEL 5 Customer Service



wwetb

Dungarvan

Tuesday 20th of September for 8 weeks
(evening class)



For more information contact catherineprendergast@wwetb.ie or
to apply online go to www.fetchcourses.ie
Course Code: 337297

[Advertised on facebook](#)

BUS DRIVING TRAINEESHIP - TRAINING COURSE THROUGH WATERFORD WEXFORD EDUCATION & TRAINING BOARD

Bus Driving Traineeship - 

This programme will provide trainees with the skills and related knowledge in the rules of the road, driving a LPSV, customer service, documentation, first aid, manual handling fire safety, digital tachograph and technical standards for LPVS.

★ Start Date: 05/09/2022

★ End Date: 21/04/2023

★ Duration: 33 Weeks

★ Location: Dungarvan

★ Contact: recruit@wwetb.ie



Waterford
Wexford
Education & Training Board

BUS DRIVING TRAINEESHIP

Course Description

The aim of this training programme is to provide trainees with the skills and related knowledge in the rules of the road, driving a LPSV, customer service, documentation, first aid, manual handling fire safety, digital tachograph and technical standards for LPVS.

CERTIFICATION

On completion of the programme, trainees will receive the following certification:

- Department of Employment Category D Driving Licence
- RSA - Driver Certificate of Professional Competence (DPC)
- ASH Level 5 Certificate in Certificate for Customer Service (ASH 501)
- Workplace Safety (ASH 502)
- Advanced Visitor Care (ASH 503)
- Work Practice (ASH 504)
- First Aid (ASH 505)

COURSE MATERIALS

All the necessary materials will be provided by the employer.

COURSE CONTENT

Subjects:

- Manual Handling and Fire Safety
- Driving Bus Category D (LPSV)
- First Aid (LPSV)
- Digital Tachograph for LPSVs
- Documentation for LPSVs
- Technical Standards for LPSVs
- Customer Service (ASH 501)
- Workplace Safety (ASH 502)
- Advanced Visitor Care (ASH 503)
- First Aid (ASH 505)
- Work Practice (ASH 504)

JOB OPPORTUNITIES

On completion of the programme, trainees will be eligible to apply for a range of job opportunities within the bus industry.

LEARNER ENTRY REQUIREMENTS

Education: Trainees must have completed the minimum requirements for entry into the programme.

Aptitude: Trainees must have the aptitude to undertake the programme and be able to learn from experience.

Previous experience: Trainees must have previous experience in the bus industry.

Special Requirements: Trainees must be able to undertake the programme and be able to learn from experience.



NEXT COURSES

Course starting in
Dungarvan 2022

For further details contact
051-301500
087-1958761
or
recruit@wwetb.ie

[Advertised on facebook](#)

**HGV TRAINING PROGRAMME TRAINING COURSE
THROUGH WATERFORD WEXFORD EDUCATION & TRAINING BOARD
PROFESSIONAL HGV TRAINING PROGRAMME**

📍Dungarvan - 5th of September 2022

Full time course - Monday - Friday

👉DRIVING HGV RIGID & ARTIC BODY 👉30 WEEKS

<https://www.fetchcourses.ie/course/finder...>

Course Code: 342270 Waterford Wexford Training Services

For further details contact ☎051-301500 087-1958761

📧recruit@wwetb.ie



**PROFESSIONAL HGV
TRAINING PROGRAMME**

The exact structure of the course will depend on the evolving nature of Covid-19 public health advice



Background to the Programme

Course Description

CERTIFICATION

• National Certificate (NC)
• Driving Rigid & Articulating
• Driving Artic Drives - Articulators, etc.
• Health & Safety Certificate
• HGV Licence Class 1 & 2 (Trucks, Trailers, Semi-trailers)
• HGV Licence Minimum 20 Years (2022/23)
• HGV Licence Training
• HGV Licence Assessment
• HGV Licence Assessment (Trucks, Trailers, Semi-trailers)
• HGV Licence Assessment (Trucks, Trailers, Semi-trailers)

COURSE CONTENT

• Introduction - Manual Handling & Load Capacity - HGV Licence Assessment
• Introduction - HGV Licence Training - HGV Licence Assessment - Driving Rigid & Articulating
• Introduction - HGV Licence Training - HGV Licence Assessment - Driving Rigid & Articulating
• Introduction - HGV Licence Training - HGV Licence Assessment - Driving Rigid & Articulating
• Introduction - HGV Licence Training - HGV Licence Assessment - Driving Rigid & Articulating
• Introduction - HGV Licence Training - HGV Licence Assessment - Driving Rigid & Articulating
• Introduction - HGV Licence Training - HGV Licence Assessment - Driving Rigid & Articulating
• Introduction - HGV Licence Training - HGV Licence Assessment - Driving Rigid & Articulating

JOB OPPORTUNITIES

LEARNER ENTRY REQUIREMENTS



NEXT COURSES

Starting in various
locations across
Waterford & Wexford
2022/2023

For further details contact
051-301500
087-1958761
or
recruit@wwetb.ie

www.fetchcourses.ie

www.waterfordwexfordtraining.ie

Waterford Wexford Training Services

Advertised on facebook

UPCOMING TRAINING IN DUNGARVAN THROUGH WATERFORD TRAINING CENTRE



**FURTHER EDUCATION &
TRAINING COURSE HUB**



Ireland's European Structural and
Investment Funds Programmes
2014-2020
Co-funded by the Irish Government
and the European Union



EUROPEAN UNION
Investing in your future
European Social Fund

[About FET](#) [Course Finder](#) [Types of Courses](#) [Grants & Allowances](#) [Adult Education Guidance](#)

[Sign In](#) [Register](#)

[Home](#) > [Course Finder](#)

REF	COURSE TITLE	PROVIDER	LOCATION	STARTS
Q45	CV and Interview Preparation	Waterford Training Centre	Dungarvan	23/08/2022
Q97	Safe Pass	Waterford Training Centre	Dungarvan	01/09/2022
09807	Professional HGV Training Programme (Traineeship)	Waterford Training Centre	Dungarvan	05/09/2022
07145	RTITB Forklift Truck Operator	Waterford Training Centre	Dungarvan	05/09/2022
07176	Bus Driving D Licence	Waterford Training Centre	Dungarvan	05/09/2022
09429	First Aid Responder PHECC	Waterford Training Centre	Dungarvan	13/09/2022
09892	Customer Service	Waterford Training Centre	Dungarvan	20/09/2022

PLEASE NOTE THE ABOVE COURSE START DATES ARE SUBJECT TO CHANGE

**ALL OF THE ABOVE COURSES ARE ORGANISED AND DELIVERED BY THE WWETB
THE LOCAL EMPLOYMENT SERVICE CAN ADD YOUR NAME TO THE "WAITING LIST"
FOR YOUR COURSE OF PREFERENCE**

**TO VIEW ALL TRAINING OPPORTUNITIES AND COURSE PROFILES PLEASE LOG ONTO
WWW.FETCHCOURSES.IE**

**IF YOU WANT YOUR NAME TO BE ADDED TO THE WAITING LIST FOR ANY OF THE ABOVE
COURSES PLEASE CONTACT YOUR CASE OFFICER**

**CLIENTS OF THE LES - LOCAL EMPLOYMENT SERVICE IN DUNGARVAN / LISMORE
CAN PHONE**

NIAMH KUHNE OR PAULA HENNESSY - LOCAL EMPLOYMENT SERVICE - TEL: 058 44077



An Roinn Coimirce Sóisialaí
Department of Social Protection

